

MISAWA FORCE SUPPORT SQUADRON

# Leisure

T I M E S



August 2025

Thank you for voting!

# Misawa FSS

Best Overall MWR | FSS | MCCS  
Mainland Japan | Small Base



@MisawaForceSupportSquadron @MisawaFSS

Experience Northern Japan with the BEST!



Misawa FSS | Best Overall MWR/FSS/MCCS\*

Misawa ODR | Best On-Base Outdoor Rec\*

Misawa ITT | Best On-Base Travel Agent\*

Misawa Club | Best On-Base Club + Best Sunday Brunch\*

Lakeview Grille | Best On-Base Restaurant\*

Gosser Golf Course | Best On-Base Golf Course

Misawa Inn | Best On-Base Lodging

Find convenient accommodations, vehicle and sporting gear rentals, enjoy gorgeous lake views, travel and more with the Misawa Force Support Squadron (FSS)!

\*Two consecutive wins.



35FSS.com

# CONTENTS



Get the Leisure Times for FREE right to your mailbox! Scan the QR code to sign up.



## Find Banzai & WIN!

Email his location to [misawa.marketing@us.af.mil](mailto:misawa.marketing@us.af.mil) for a chance to win a \$50 FSS gift card. Banzai was on page 17 in the July Leisure Times.



[35fss.com](http://35fss.com) [@MisawaFSS](https://www.instagram.com/MisawaFSS) [@MisawaForceSupportSquadron](https://www.facebook.com/MisawaForceSupportSquadron)

Page 4



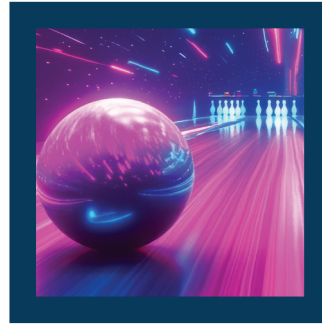
Wing Sports Day

Page 8



Splash & Craft Summer Bash

Page 24



National Bowling Day

Page 26



Base Championship

### Command

**Commander, 35th Fighter Wing**  
Col Paul T. Davidson

**Commander, 35th Mission Support Group**  
Col John P. Conner

**Commander, 35th Force Support Squadron**  
Maj Jessica B. Richmond

**Deputy, 35th Force Support Squadron**  
Mr. Stefan Kelly

### Marketing & Publicity

**Marketing Director/Managing Editor**  
Kim Tato

**Marketing & Sponsorship Assistant**  
Ayub Spencer

**Communications Specialists**  
Leanna Duff  
Samantha Nelson

**Commercial Artist**  
Wakouko Sato

**Illustrators**  
Kazunori Takahashi  
Mami Takabatake

Find  
**Banzai Winner**

June 2025

Genevieve Rodriguez

### WANT TO PURCHASE AD SPACE IN THE LEISURE TIMES?

Contact us at [misawa.marketing@us.af.mil](mailto:misawa.marketing@us.af.mil). The Leisure Times is designed to entertain and inform the Misawa Air Base community about 35th Force Support Squadron facilities. Opinions expressed in the Leisure Times do not necessarily represent those of the U.S. Air Force. All submissions are subject to editing prior to printing.

### Culture & Travel

6 ODR Tours  
10 ITT Tours

### Resources

11 Auto Hobby • JCI Inspection  
14 Military & Family Readiness Center Programs  
16 Education & Training • MilTA • SkillBridge • Military Testing  
17 NAF HRO  
23 Overstreet Memorial Library  
31 Pet Kennel  
33 Banzai Award  
34 Weasel Express Shuttle Service  
35 FSS Directory  
36 FSS Event Calendar

### Entertainment

2 Best of the Pacific Winners  
5 Tour de Ogawara  
8 Himberg Pool • Pool Party • Splash & Craft Summer Bash • Base Beach  
9 Area 35 • Lightspeed Paintball • Super Saturday • The Lodge  
12 Comedy Show • Club Member Social • Family Member Social  
13 Dance Class • Trivia Night • Celebrity Bartender Night  
24 Pins & Prizes • HyperBowling Blast • National Bowling Day  
25 Red Pin Tuesday • Hyper Thursday • Laser Storm Bowling • Airmen's Alley  
30 Taiko Drumming Class • Friday Night Bingo

### Learn & Create

19 Brushes & Beverages • Cocktails & Ceramics  
23 DoD MWR Digital Library

### Fitness & Sport

4 Wing Sports Day • Misawa AFG Rocket League In-Season Tourney  
5 Tour de Ogawara  
26 Golf Course • Base Championship  
27 Youth Sports • Volunteer Coaches • Instructors Wanted

### Dining

13 Aomori Eats • Sunday Breakfast Buffet • Taco Tuesday • Wing Wednesday • Tanuki's • Touch & Go • Wild Weasels' Bar & Grill  
20 August Dining Specials  
22 Grissom DFAC • Weekly Specials • Sub Station • 3rd Quarter Birthday Meal  
25 Kids Eat FREE Night

### Youth & Family

6 Dutch Oven Cooking Class • Campfire Stories • Camping 101  
8 Family Fun Night • Pool Party • Splash & Craft Summer Bash  
12 Family Member Social  
19 Young Van Gogh • Mini Monet  
23 Summer Reading Program Closing Party • Weekly Story Time • STEM Programs • Pokémon™ TCG Club • Toddler Play Group  
24 Kids Bowl FREE  
27 Flag Football  
28 Bring a Friend Friday • Rolling Back to School • Back to School Picnic Bash  
29 Back-to-School Shopping • Ceramic Painting • Color Splash  
32 DODEA Sollars & Edgren • Back to School



35th  
**FSS**  
Misawa Air Base, Japan

# Potter

## FITNESS CENTER

Potter Fitness Center | BLDG. 622 | 226-1964

Freedom Fitness Center | BLDG. 1962 | 226-9987

Iron Hand Fitness | BLDG. 1006, Bay 3  
24/7 Access Card Only

 @MisawaFitnessAndSports



# WING

# Sports Day

**Friday, Aug. 29**

Formation Run | 6:30 a.m.

Opening Ceremony | 7 a.m.

Games Start | 8 a.m.

FSS Turf Field | FREE

Open to All | Ages 18+



Get ready for an ADRENALINE RUSH and prepare for a relentless barrage of challenges! Squadrons can compete in pickleball, soccer, E-Sports, scavenger hunt, flag football, Home Run Derby™, volleyball, the BIG 3 Powerlifting Challenge, pool obstacle course, basketball, hot dog eating and tug of war. Be there to compete and witness the rise of the Wing Sports Day Champions!

To participate, contact the listed POCs if you haven't already connected with your Unit Sports Rep. They'll help get you signed up.  
SrA. Hamilton, Audrey or SSgt. Almanza, David

## Misawa AFG

## Rocket League

*Inv-Season Tourney*

**Online Gaming Starts | Saturday, Aug. 9**

Saturday-Sunday | 10 a.m.-3 p.m.

Open to All | Ages 13+

Misawa Discord | FREE

**Championship Finals**

Friday, Sept. 12

Starts | 6:30 p.m.

Open to All | Ages 13+

Community Commons | FREE



# Tour de OGAWARA

Saturday, Sept. 13

Check-in | 7 a.m.

Starts | 7:30 a.m.

\$55 per person | \$40 M1\*

Ages 16+ \*\*

Presented by



No federal endorsement of  
advertiser(s) intended.

Challenge yourself on this 30+ mile cycling course that makes its way off-base and shadows the coast roads around Lake Ogawara. Bring your own bike or rent one from ODR. The sun is out, so start training today!

- Participants must be registered for the event in order to leave out of the same gate of the event

\*Misawa First (M1) discount prices are for active duty military and their family members assigned to Misawa Air Base. Verification in the form of a military/family member ID must be provided at time of enrollment.

\*\*Those under 18 years of age must have a parent or guardian participating.

## WHEELS AFTER WORK

Wednesday, Sept. 3 & 10

Departs | 3 p.m.

Returns | 7 p.m.

\$15 per person

Ages 18+

Hit the road, Jack! These after work adventures are exactly what the doctor ordered. We'll pick a different path each Wednesday with a driver so we don't retrace our steps. Choose from three different styles of bike or bring your own.

**Includes:** Transportation, Adventure Guide, bike & helmet rental

## MT. IWAKI HIKE

Saturday, Sept. 6

Departs | 5 a.m.

Returns | 7 p.m.

\$95 per person | \$55 M1\*

Ages 18+

Mt. Iwaki is located in the southwestern part of Tsugaru Plain, also called Tsugaru Fuji. It is the highest mountain in our prefecture with an elevation of 1,625 meters that we'll hike for 10 km. The apple field and rural landscape with Mt. Iwaki extending out in the background is one of the most beautiful sights in Aomori.

**Includes:** Transportation, Adventure/Mountain Guide, backpack & trekking poles

- Participants are required to wear hiking boots, long pants and bring other appropriate clothing. Cotton clothes, jeans and sneakers are NOT permitted
- Physically challenging

## DUTCH OVEN COOKING CLASS

Friday, Sept. 12

4:30–8 p.m.

Outdoor Recreation Center | BLDG. 486

\$35 per oven (max two people per oven)

Ages 7+\*\*

Tired of hotdogs and hamburgers while you're camping? Want to learn how to make easy and cost-effective one pot meals? Then this is the class for you! Join us as we show you how to make some of our favorite dutch oven meals!

## LAKE TOWADA KAYAK

Sunday, Sept. 14

Departs | 9 a.m.

Returns | 5:30 p.m.

\$75 per person | \$45 M1\*

Ages 16+\*\*

We're headed to Lake Towada to enjoy the views of the surrounding mountains and forests. This is a great opportunity to take tons of beautiful pictures!

**Includes:** Transportation, Adventure Guide/ACA kayak instructor, personal flotation device & sit-on-top kayak

## MICHINOKU COASTAL

### TRAIL SERIES: FUNAKOSHI-OMOE

Friday, Sept. 5–Sunday, Sept. 7

Departs | 4 p.m.

Returns | 6 p.m.

\$450 per person | \$275 M1\*

Ages 18+

As part of the final installment of our Michinoku Coastal Trail Series, we've added a bonus: water sports. We're bringing snorkel gear and kayaks to enjoy some underwater scenery along with seeing the water from dizzying cliffside heights before settling down to camp at night.

**Includes:** Transportation, Adventure Guide/ACA kayak instructor, campground fee, tent, headlamp, sleeping bag & pad

## LATE NIGHT AT THE LAKE: CAMPFIRE STORIES

Wednesday, Sept. 10

5–7:45 p.m.

FREE | All Ages\*\*

What's better than s'mores at the Base Beach? Listening to campfire stories at the Base Beach WHILE eating a s'more! We'll bring the marshmallows, graham crackers, chocolate, firewood and stories. Bring your friends and families!

- No registration required, just join us at the Base Beach for some fun!

*Special Event*



## TOUR DE OGAWARA

Saturday, Sept. 13

Check-in | 7 a.m.

Starts | 7:30 a.m.

\$55 per person | \$40 M1\*

Ages 16+\*\*

See page 5 for more details.

Presented by



No federal endorsement of advertiser(s) intended.

**SEPTEMBER ADVENTURES  
GO ON SALE  
FRIDAY, AUG. 1**

\*Misawa First (M1) discount prices are for active duty military and their family members assigned to Misawa Air Base. Verification in the form of a military/family member ID must be provided at time of enrollment.

\*\*Those under 18 years of age must have a parent or guardian participating.

**LAKE TAZAWA  
CAMPING ADVENTURE**

Saturday, Sept. 20–Sunday, Sept. 21

Departs | 7 a.m.

Returns | 5 p.m.

\$175 per person | \$95 M1\*

Ages 12+ \*\*

Join us as we head to Lake Tazawa for a fun-filled fall camping adventure. On our way to camp, we'll stop and hike one of our favorite trails in the region. Once we arrive at camp, you'll have the opportunity to enjoy the lake via one of our inflatable SUPs (standup paddle boards) or kayaks. At night, we'll settle down and cook a dutch oven style dinner together and enjoy good company over a campfire.


**Includes:** Transportation, Adventure Guide, dutch oven dinner & breakfast, tent, sleeping bag & pad, headlamp, personal flotation device & inflatable kayak or stand up paddleboard

**OUTDOOR**

*Recreation*

BLDG. 486 | 226-9378

 @MisawaOutdoorRecreationCenter

 @MisawaODR

**KAWARAGE WILD HOT SPRING**

Saturday, Sept. 20–Sunday, Sept. 21

Saturday, Sept. 27–Sunday, Sept. 28

Departs | 8 a.m.

Returns | 8 p.m.

\$275 per person | \$165 M1\*

Ages 18+

Experience something unbelievable on this regional adventure—a hot waterfall flowing straight from the depths of the earth. On top of visiting Kawarage Hot Spring, you'll spend the rest of the time exploring regional wonders and taking in Japan's natural beauty.

**Includes:** Transportation, Adventure Guide, lodging & admission fees

**LATE NIGHT AT THE LAKE:  
CAMPING 101**

Friday, Sept. 26–Saturday, Sept. 27

Begins | 4:30 p.m.

Ends | 10 a.m.

\$45 per 2-person tent campsite

\$55 per 4-person tent campsite

All Ages \*\*

Join us at the Base Beach as we teach you how to set up a Leave No Trace friendly campsite. We'll provide everything you need and teach you the basics so that you leave the next morning ready to plan your own camping trip!

**Includes:** Adventure Guide, 2 or 4-person tent, sleeping bag & pad, headlamp & camp-friendly dinner

- Transportation not included

# POOL *Himberg*

BLDG. 625 | 226-7665

## Special Event



### SPLASH & CRAFT SUMMER BASH



Saturday, Aug. 9

11 a.m.–2 p.m. \*\*

FREE | All Ages \*\*\*



Join us for a fun-filled day of swimming and creativity! Cool off in the pool with our inflatable obstacle course, enjoy the open swim area or jump around in our bouncy house. Plus, unleash your creativity with the Misawa Arts & Crafts Center! Paint your own mini masterpiece or make keychains to take home. Food and beverages will be provided to keep you refreshed!

- Food, beverages & crafts are while supplies last
- \*\* Inflatable obstacle course will be available at noon
- \*\*\* Must be ages 7 & up with a deep-water card to go on the inflatable obstacle

### HOURS OF OPERATION

Monday, Wednesday & Friday | 6 a.m.–7 p.m.

Tuesday & Thursday | 8 a.m.–7 p.m.

Saturday | 8 a.m.–Noon & 1–4 p.m.

FW Down Days | 10 a.m.–5 p.m.

CLOSED | Last Wednesday of the month,

Sundays, US & select JP federal holidays

Call 226-7665 or visit Himberg Pool for PT reservations.

### FAMILY FUN NIGHT

Every Friday\* | 5–7 p.m.

FREE | All Ages

Enjoy an evening of fun with the whole family at the Himberg Pool. Bring your favorite water toys, Super Soakers™, Nerfballs® and US Coast Guard approved inflatables to the pool for a great time! All regular Himberg Pool rules and age requirements apply.

\*No Family Fun Night on FW Down Days

### POOL PARTY

Friday, Aug. 22 | 5–7 p.m.

FREE | All Ages

Eat, drink, play and laugh when Family Fun Night takes it to the next level with our monthly Pool Party. We provide Flyers pizza and beverages, and give you the chance to take out all of our toys! All regular Himberg Pool rules and age requirements apply.

## Base *BEACH*

### GATE ACCESS

Monday–Sunday | 5 a.m.–8 p.m.

Please follow all safety signage guidance with all Base Beach recreation.

### BOATHOUSE RENTAL HOURS

Saturday & Sunday | 10 a.m.–5 p.m.

Rent kayaks, stand up paddleboards, canoes and NEW this year—paddle boats! A limited amount of resale items are also available at the Boathouse Rental store.

**The Boathouse Rental store is a cash (USD) only facility.**

Large Pavilion, Small Pavilion, Yuko Cabin, Beach Cabins and campsite reservations **must be made at the Outdoor Recreation Center (BLDG. 486) during normal business hours.** Reservations can be made up to 30 days in advance.

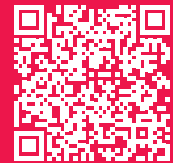


# AREA 35



Need a ride to Area 35?  
ODR has you covered.  
Reserve your spot on the  
FREE shuttle!

**FREE Shuttle**



## SUPER SATURDAY

Saturday, Aug. 2  
10 a.m.–5 p.m.

**Ages 16+ to play\***

**Ages 10+ to play with a parent and/or guardian (18+ years) actively participating  
2,000 paintballs\*\* | \$65**

Enjoy playing paintball, shooting archery and using our axe throwing lanes! No advance registration is required.

\*Axe throwing is for ages 16+ only. An adult, age 18+ must sign liability waivers and must be on site at all times.

\*\*Paintballs are an additional fee. Area 35 is a cash only (USD) facility. Credit card payments are accepted at ODR, BLDG. 486, during business hours.

## LIGHTSPEED PAINTBALL

Friday, Aug. 15 | 6–9 p.m.

**Ages 16+ to play**

**Ages 10+ to play with a parent and/or guardian (18+ years) actively participating**

**2,000 paintballs\*\* | \$65**

Play paintball under the lights of our speedball court. Enjoy FREE field entries, Attack Pack rentals and food! No advance registration is required.

\*\*Paintballs are an additional fee. Area 35 is a cash only (USD) facility. Credit card payments are accepted at ODR, BLDG. 486, during business hours.



## THE LODGE

BLDG. 1482 | 226-9378

Get exclusive use of the facility for the day. Book your next birthday party, going away, baby shower or another event at The Lodge. Reservations are available year-round, visit the Outdoor Recreation Center to make one today.

**\$50**

**Noon–10 a.m. next day**

**Max. occupancy 70**

### Lodging Amenities:

- Booths & Couches
- Restrooms
- Refrigerator
- Sink
- Microwave
- TV
- DVD Player
- Foosball Table

## Kuzumaki Winery

Saturday, Sept. 6

On sale Wednesday, Aug. 6

Ages 20+ | \$60

Departs | 9:30 a.m.

Returns | 4:30 p.m.

Learn about the process of wine making. Enjoy lunch perfectly paired with a variety of local wine samples.

**Includes:** Transportation, wine factory tour, lunch & tour escort

## Sendai Baseball

Saturday, Sept. 13

On sale Wednesday, Aug. 13

Saturday, Sept. 20

On sale Wednesday, Aug. 20

Departs | 8 a.m.

Returns | 10:30 p.m.

Ages 12+ | \$75

Ages 3–11 | \$65

Ages 2 & under | \$30

**Includes:** Game ticket, roundtrip transportation & tour escort

## Hiraizumi

Saturday, Sept. 13

On sale Wednesday, Aug. 13

Departs | 7 a.m.

Returns | 8 p.m.

Ages 12+ | \$70

Ages 6–11 | \$50

Ages 5 & under | \$30

Enjoy a cruise down the Geibikei Gorge, a trip to Konjiki-do (the Golden Hall) and a visit to the Chuson-ji Temple, a national treasure.

## Charter Bus

All organizations interested in chartering a bus for a tour should stop by ITT to make reservations. Reservations are accepted up to 90 days in advance of the trip date and are taken on a first come, first served basis.

## Happy Birthday from Misawa ITT!

Save up to \$10 on any local tour scheduled during your birth month, limit one per individual.

## Ryusendo Caves\*



Saturday, Sept. 27

On sale Wednesday, Aug. 27

Departs | 7:30 a.m.

Returns | 6 p.m.

Ages 15+ | \$70

Ages 6–14 | \$60

Ages 5 & under | \$20

Visit one of the three largest stalactite caves in Japan. Explore beautiful caverns up to 120 meters deep where stalactites and stalagmites are abundant. Then visit the Kuji Amber Museum and enjoy making your own amber accessory made from UV cure resin.

## Tanbo Art & Kokeshi Painting

Saturday, Sept. 27

On sale Wednesday, Aug. 27

Departs | 7:30 a.m.

Returns | 6:30 p.m.

Ages 12+ | \$55

Ages 4–11 | \$50

Ages 3 & under\*\* | \$20

Travel to Inakadate to view the stunning Tanbo art (rice paddy art) on display there. Follow that with a trip to Kuroishi to see the Tsugaru Kokeshi Museum where you will have the chance to paint your own!

\*\* Craft fee not included for children ages 3 & under

## Hours of Operation

Monday–Friday | 9 a.m.–4 p.m.

CLOSED | Saturdays, Sundays & federal holidays.

For more information call 226-3555.



## \* Misawa First

A discount of 20% will be applied for active duty military and their family members assigned to Misawa Air Base. Verification in the form of a military/family member ID must be provided at time of enrollment.

BLDG. 485 | 226-3555 | @MisawaITT

# Misawa

# ITT

## September Trips

## Tokyo Sumo

Thursday, Sept. 18–Sunday, Sept. 21

On sale now

Departs | 7 a.m.

Returns | 6 p.m.

**Includes:** Round trip transportation by bus, three nights of accommodations at The New Sanno, one day of admission to Tokyo Sumo, an English speaking tour escort and one free day to explore Tokyo on your own!

# Auto Hobby CENTER

BLDG. 767 | 226-4654 | [f](#) @MisawaAutoHobbyCenter

## JCI Inspection

### 1.

#### Schedule a Pre-JCI Inspection

Appointments for Pre-JCI inspections are available Monday–Friday at 7:30 a.m. only. Please schedule in advance to secure your slot.

### 2.

#### Pre-JCI Inspection

Our team will conduct a comprehensive inspection of approximately 270-line items to assess the vehicle's condition and JCI compliance.

### 3.

#### Pre-JCI Inspection Results

##### a. Car Fails the Inspection

- You will receive a detailed inspection report, including a cost estimate for completing the JCI process.
- A new appointment must be scheduled for the Finish-JCI inspection.
- You must pay the Weight Tax and the 25 Month JCI Policy in ¥ (cash only) BEFORE paperwork renewal, preferably at the time of vehicle drop-off.

##### b. Car Passes the Inspection

- You must pay the Weight Tax and the 25 Month JCI Policy in ¥ (cash only) BEFORE paperwork renewal.
- Your vehicle will then proceed to the Finish-JCI inspection.

### 4.

#### Finish-JCI Inspection

Drop off your vehicle at 7:30 a.m. and our team will check the Brake Pressure, Alignment, Emissions, Safety Restraint Devices and Headlights. Same day pick-up is available after 4:30 p.m.

##### Upon passing the Finish-JCI Inspection:

- Your JCI paperwork will be renewed.
- You will be issued a JCI Policy (Jibai) along with a Temporary JCI Sticker applied to your windshield to act as your temporary title.
- If your JCI is completed between Monday–Wednesday, you must return on Friday of the current week to collect your official Vehicle Title and Road Tax receipt. If it's completed on Thursday or Friday, your title and receipt will be available the following Friday afternoon.



## Closures/Specials Hours

Maintenance Day

Monday, Aug. 4

All Operations | CLOSED



@MisawaClub

Stay connected with us on social media to discover exclusive upcoming events you won't want to miss!

## COMEDY SHOW

RUNAKO featuring  
Yuki Nivez & Ryo Hayashi  
Friday, Aug. 1  
Doors Open | 6 p.m.  
Show Starts | 7 p.m.  
Faultline | Ages 18+  
FREE



# MISAWA

# CLUB

WHERE GOOD VIBES AND GOOD TIMES ARE ALWAYS ON THE MENU!



BLDG. 485 | 226-9122

Become a Club Member and receive all of the wonderful benefits that come along with it!

Meal vouchers, FREE room rentals, 10% off dining facilities and so much more.

Visit [Memberplanet.com](http://Memberplanet.com) to sign up today!



### FIRST FRIDAY NIGHT CLUB MEMBER SOCIAL

Friday, Aug. 1

4:30–7 p.m.

18+

Faultline

**CLUB MEMBERS ONLY | FREE**

Club Members are invited to come and unwind after a fulfilling week of work. Enjoy a grazing buffet, drink specials and an exciting raffle prize.

### TUESDAY NIGHT FAMILY MEMBER SOCIAL

Tuesday, Aug. 19

4:30–7 p.m.

All Ages

Misawa Club

**CLUB MEMBERS ONLY | FREE**

Get more out of your club membership. Member families can enjoy a FREE night of food, drinks and movie entertainment! Scan the QR on the left to become a member today.

# Dining

## AOMORI EATS

Live Action Stations  
Monday–Thursday  
10:30 a.m.–1:30 p.m.

Lunch | Monday–Friday  
10:30 a.m.–1:30 p.m.

Dinner | Monday–Wednesday  
4:30–8 p.m.

Sakura Room  
Dine in or order to-go.  
Place an order over the phone at  
226-5062 or 0176-77-5062, or order  
to-go at the door.

## TANUKI'S

Wednesday–Saturday | 4:30–10 p.m.

## TOUCH & GO

Monday–Friday | 6 a.m.–6 p.m.  
Saturday | 8 a.m.–2 p.m.

## WILD WEASELS'

BAR & GRILL  
Thursday–Saturday | 4:30–9 p.m.

## SUNDAY

### BREAKFAST BUFFET

Every Sunday  
9 a.m.–1:30 p.m.  
Club Members | \$15  
Non-Members | \$18  
Ages 5–11 | \$9  
Ages 4 & under | FREE  
Join us for our traditional Sunday  
breakfast with an awesome waffle station  
and all-American favorites, plus delicious  
lunch options featuring a variety of  
specialty dishes each week.

## TACO TUESDAY

Tuesday | 4:30–8 p.m.  
\$1.25 each  
Olé, it's Taco Tuesday! Choose from  
beef, chicken or pork, loaded on soft  
tortillas or crunchy taco shells, with  
fresh toppings just the way you like it.

## WING WEDNESDAY

Wednesday | 4:30–8 p.m.  
\$.75 per wing  
Wing Basket | \$6 for 6 wings & fries

## BINGO NIGHT WITH COMMUNITY COMMONS

See page 30 for details

## FRIDAY NIGHT BINGO

Friday, Aug. 8 & 22  
Doors Open | 6 p.m.  
Game Starts | 7:30 p.m.

18+

# Recurring Events

## TRIVIA NIGHT

Thursday, Aug. 21  
Doors Open | 5 p.m.  
Game Starts | 6:30 p.m.  
Faultline  
Members | \$5  
Non-Members | \$10

18+

## DANCE CLASS

Every Saturday  
6–8 p.m.  
Tanuki's | FREE  
Just show up with your dancing shoes  
and we'll lead the way!

18+

## CELEBRITY BARTENDER NIGHT

Karaoke & 90's Music Night  
Friday, Aug. 8  
7–9 p.m.

18+

## COLLABORATION WITH MISAWA ARTS & CRAFTS CENTER

See page 19 for details

## COCKTAILS & CERAMICS

Thursday, Aug. 7  
6–8:30 p.m. | Faultline

18+

## BRUSHES & BEVERAGES

Friday, Aug. 15  
5:30–8:30 p.m. | Faultline

18+

All programs and events are FREE, but registration is required for each class. All events take place at the M&FRC, unless otherwise stated. Scan the QR code to sign up. Class dates and times are subject to change.



SIGN UP

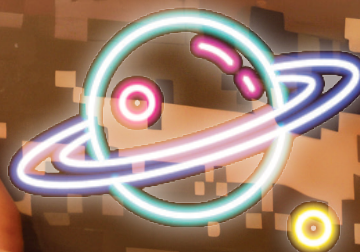
MILITARY & FAMILY READINESS CENTER

# M&FRC

BLDG. 656 | 226-4735

 @MisawaM&FRC

 @Misawa\_MFRC



## SPONSORSHIP TRAINING

Tuesday, Aug. 5 | 1 p.m.

Get the training, tools and resources you need to support incoming service members and their families. This course is open to all Misawa Air Base members, covering the essentials of effective sponsorship and preparing you to guide newcomers through the challenges of relocating overseas and settling in at Misawa Air Base, Japan.

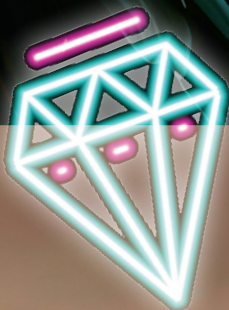
## NEWCOMER'S ORIENTATION: RIGHT START

Right Start is a mandatory orientation held at the Misawa Club, BLDG. 485, for all inbound military personnel and DoD Civilians. Please contact your unit's CSS to sign up.

**Loan Locker:** First-come, first-serve basis of borrowed dish packs and other essential items as you wait for your Household Goods or after you Pack-Out for departure.

## CLOSURES

CLOSED | Every Thursday | 2–4 p.m.  
CLOSED | Every third Thursday of the month,  
weekends & federal holidays



## PERSONAL FINANCIAL READINESS

Provides service members and their families with financial information and resources through workshops and one-on-one appointments.

## TRANSITION ASSISTANCE PROGRAM (TAP)

Congressionally mandated program for all those separating or retiring that provides information, tools and resources for a successful transition out of the service.

## AIR FORCE AID SOCIETY (AFAS)

AFAS can provide emergency financial assistance to service members in need. AFAS also funds community programs like Bundles for Babies, Child Care for PCS and Give Parents a Break.

## COMMANDER KEY SUPPORT PROGRAM (CKSP)

The mission of the CKSP is to provide support to spouses and families through information, resources and referrals.

## INTER-CULTURAL PROGRAM

Provides resourceful information, education and skills for members to get acclimated to Misawa Air Base and the local community.

First Step Japanese | Monday, Aug. 4, 11 & 25 | 11:30 a.m.

Next Level Japanese | Wednesday, Aug. 6 & 27 | 6:30 p.m.

Japanese Cooking Class | Thursday, Aug. 7 | 11:30 a.m. • Tuesday, Aug. 12 | 5 p.m.

Language Exchange Night | Tuesday, Aug. 26 | 6 p.m. | Mokuteki Ballroom, BLDG. 626

## MILITARY & FAMILY LIFE COUNSELOR (MFLC)

MFLCs offer short-term counseling services focused on situational concerns and issues fused with problem-solving strategies for service members and their families.

Misawa Mindfulness | Every Friday | 10:30 a.m. | Community Commons, BLDG. 1006

Work Life Balance | Tuesday, Aug. 5 | 9 a.m.

Resilience During Uncertainty | Thursday, Aug. 21 | 2 p.m.

## PERSONAL & WORK LIFE

This program offers classes that focus on building and maintaining personal resiliency and healthy relationships.

## DEPLOYMENT PROGRAM

The M&FRC offers support services to military members, civilians and their families throughout every phase of the deployment and remote tour cycle. All workshops require advance registration.

- By appointment only through Tockify

## EXCEPTIONAL FAMILY MEMBER PROGRAM (EFMP)

EFMP Family Support provides Non-Clinical Case Management, comprehensive coordinated community support and unique utilizable resources.

- Join us alongside our deployed families for our **Backpack Supply Event** on Friday, Aug. 1.

## VOTING

The Federal Voting Assistance Program (FVAP) works to ensure service members, their eligible family members and overseas citizens are aware of their right to vote and have the tools and resources to successfully do so, from anywhere in the world.



# Education & Training OFFICE

## MilTA Briefings

Thursday, Aug. 7 & 21 | 1 p.m.

Thursday, Aug. 14 & 28 | 9 a.m.

Education Center Classroom | BLDG. 653, RM. 204

Military Tuition Assistance Briefings are required for Airmen who are using MilTA for the first time and for Airmen who have been inactive in using their TA benefits for over one year.

**Air Force Personnel:** Register for the briefing via Air Force Virtual Education Center (AFVEC) Events Calendar.

## Military Testing

Thursday, Aug. 7 | 8 a.m. & 1 p.m. | DLPT • AFCT • ASVAB

(Civilian Only - Cyber Test, TAPAS, Mental Counters, Coding Speed)

Thursday, Aug. 14 | 8 a.m. | AFOQT • WAPS

Thursday, Aug. 28 | 8 a.m. & 1 p.m. | DLPT • AFCT • ASVAB

(Civilian Only - Cyber Test, TAPAS, Mental Counters, Coding Speed)

Schedule your next military test via AFVEC > Schedule Tests > Select Base and Test Abbreviation. To schedule a test for AFRAT, EDPT and OPI, please send an inquiry request to our TCO via email at [35mss.educationtesting@us.af.mil](mailto:35mss.educationtesting@us.af.mil).

## SkillBridge Briefing

Wednesday, Aug. 27 | 1 p.m.

Education Center Classroom | BLDG. 653, RM. 204

Learn about the SkillBridge program and how to apply. This briefing is open to all branches and is required for Airmen who plan to apply through the Misawa Education Office. We recommend Airmen attend the briefing at least one year prior to their DOS/DOR.

**Air Force Personnel:** Register for the briefing via AFVEC Events Calendar.

**Navy Personnel:** Contact the Education & Training Office to register.



BLDG. 653, RM. 203 | 226-4201 | [MisawaEducationOffice@us.af.mil](mailto:MisawaEducationOffice@us.af.mil)

[f](#) @MisawaABEducation&Training

## HOURS OF OPERATION

Monday, Tuesday & Thursday | 8 a.m.–Noon & 1–4 p.m.

Wednesday | 9 a.m.–Noon & 1–4 p.m.

Friday | 8 a.m.–Noon

CLOSED | Weekends & federal holidays

# Position Spotlight

## Child & Youth Program Assistant



### Child & Youth Program Assistant (All levels)

The incumbent will serve as a Child and Youth Program Assistant (CYPA) in one or more child and youth programs and will be accountable for the whereabouts and safety of children and youth. Provides care/supervision, oversight and accountability for program participants. Assists in preparing age-appropriate activities; supervises children and youth during indoor and outdoor activities, on field trips, outings and special events; arranges and serves snacks/meals. Executes work in accordance with policies and regulations. May be required to transport children in government vehicles.

### Child & Youth Program Assistant (Target level)

Coordinates and conducts activities for children and/or youth ranging in age from 6 weeks to 18 years. Creates an environment which welcomes participant interest and promotes positive interactions. Implements program options for children and youth with special requirements. Demonstrates, instructs, leads and facilitates planned and spontaneous program activities. Briefs staff, management and parents on activities. Conducts inventory on equipment and supplies.

### Child & Youth Program Assistant (Intermediate level)

Assists in planning, coordinating and conducting activities for program participants. Creates an environment which welcomes participant interest and promotes positive interactions. Implements daily schedules and activity plans to ensure age/stage appropriateness. Briefs staff, management and parents on activities. Conducts inventory on equipment and supplies.

### Child & Youth Program Assistant (Entry level)

Performs simple routine tasks following step-by-step instructions. Assists in providing planned activities using prepared curriculum and program materials. Creates an environment which welcomes participant interest and promotes positive interactions. Generates a list of needed supplies and equipment. Attends to the physical needs of the children, as applicable.



### BENEFITS

- Child Development Program will provide 100% childcare fee discount for all CYP direct care staff for the first child enrolled in a full-time or regular part-time DAF CDP.
- A 25% discount will apply for any additional children of direct care staff.  
Note: Direct care staff must spend a minimum of 75% of their work schedule in the classroom and flex employees who average 15 hours a week.  
Please contact local NAF HR Office for additional information.

### REQUIREMENTS

- Individuals must fully meet qualification/eligibility/background requirements for these positions.
  - This includes providing any supporting documents needed for verification.
- Non-U.S. Nationals must have resided in the U.S. or U.S. Territory for three or more years prior to selection.
- Applicants must be at least 18 years of age at time of hire.



CDC



SAC



LYC



MTC



**Class sign-ups begin  
Friday, Aug. 1**

\* Advance registration is required for all classes, as spots are limited. Failure to reach minimum class participation may result in a rescheduled date or cancellation. Please sign up at Arts & Crafts, BLDG. 645.

*Misawa*  
**ARTS &  
CRAFTS  
CENTER**



Skills & Trades Center  
BLDG. 645 | 226-4279

 @MisawaArtsAndCraftsCenter

# Adult Classes



## COCKTAILS & CERAMICS

Thursday, Aug. 7 | 6–8:30 p.m.

BLDG. 485 | Faultline

\$15 | Ages 18+

Ages 20+ may consume alcohol

Join us for a fun-filled ceramic painting night at the Misawa Club! Order your favorite drinks, relax and unleash your creativity as you paint your choice of three themed ceramics available when signing up. Don't miss out on this relaxing and creative evening—grab your friends and paint the night away!

- Fired ceramics will be ready for pick-up about 10–14 days after the class.
- No outside food or drinks allowed

**Advance registration is required at Arts & Crafts, BLDG. 645.**

**Sign up by 5 p.m. on Thursday, Aug. 7\***



## BRUSHES & BEVERAGES

Friday, Aug. 15 | 5:30–8:30 p.m.

Social time | 5:30–6 p.m.

Painting begins | 6 p.m.

BLDG. 485 | Faultline

\$25 | Ages 18+

Ages 20+ may consume alcohol

In collaboration with the Misawa Club, Brushes & Beverages will take place at the Faultline! Place your drink orders, enjoy your special beverage, grab a brush and learn new painting techniques for a night of fun! Basic painting skills are required, but this class is open to all levels.

- No outside food or drinks allowed

**Advance registration is required at Arts & Crafts, BLDG. 645.**

**Sign up by 4:30 p.m. on Friday, Aug. 15\***



# Kid Classes



## MINI MONET

Saturday, Aug. 16

Noon–1:30 p.m.

BLDG. 645 | Arts & Crafts

\$18 | Ages 5–9

A fully instructed class that is dedicated to teaching new skills and techniques to create a beautiful masterpiece. Parental supervision is required.

**Sign up by 11 a.m. on Saturday, Aug. 16\***



## YOUNG VAN GOGH

Saturday, Aug. 23

Noon–1:30 p.m.

BLDG. 645 | Arts & Crafts

\$20 | Ages 10+

A fully instructed class that teaches advanced skills and techniques. This class requires basic painting skills, but is open to all levels.

**Sign up by 11 a.m. on Saturday, Aug. 23\***



# AUGUST Dining



## Fit Pit

Inside Potter Fitness Center | BLDG. 622 | 957-1561

Maintenance Day Closure

Thursday, Aug. 7 | Early CLOSURE at 5 p.m.

Facebook icon @MisawaFitPitCreations



### Tropical Paradise

\$6.50

Escape to a Tropical Paradise with our delightful smoothie, made with a blend of juicy strawberry mix, luscious mango mix, refreshing pineapple & a dash of vanilla protein powder.



## Flyers

BLDG. 626 | 226-8255

Maintenance Day Closure

Monday, Aug. 11 | 5:30 a.m.–5:30 a.m. the next day

Facebook icon @MisawaFlyers



### Flyer Steak Wrangler Burrito

\$12

Savor the bold flavors of the Steak Wrangler Burrito—a delicious combination of tender top sirloin, mixed cheese, cilantro lime rice, lettuce, pico de gallo & our special in-house chipotle sauce.



### Raspberry Peppermint Latte

Grande | \$5

Raspberry & peppermint syrup latte. Hot or Iced



### Iced Charles

Grande | \$5

Lemonade & passion tea with a hint of lime & blackberry syrup. Iced Only



# Specials



## Chicken Pesto Wrap E

\$10

Grilled chicken breast, creamy mozzarella cheese, crisp lettuce, juicy tomato & our homemade pesto sauce, all wrapped up in a soft flour tortilla. Served with fries & a 16 oz. drink.

## ESM Card Users

- 1 | Go to any of the listed dining locations
- 2 | Choose any ESM approved menu item
- 3 | Swipe your meal card

E Items are ESM approved

⊘ Items are not ESM approved

## Bumpers Fusion Diner



BLDG. 627 | 957-1554

Maintenance Day Closure

Tuesday, Aug. 5



## Lakeview Grille

Gosser Golf Course | BLDG. 1464 | 957-1564

Maintenance Day Closure

Monday, Aug. 18

## Chicken Quesadilla E

\$8

Crispy chicken pieces smothered in our homemade creamy jalapeño sauce, paired with a perfectly melted cheese blend, all wrapped in a flour tortilla.



## Spicy BBQ Burger E

\$9.50

Juicy BBQ burger smothered in our homemade jalapeño BBQ onion sauce, topped with American cheese & crispy onion rings on a Kaiser roll.

# SUB STATION Available Daily

## WRAPS & BREAD

\*Price varies by meat selection

- Deli Wrap \$1.85
- Garden Wrap \$1.25
- Tuna Wrap \$1.40
- Hoagie\*

## TOPPINGS & SAUCES

- |              |                 |                              |
|--------------|-----------------|------------------------------|
| Black Olives | Caesar Dressing | American, swiss or provolone |
| Lettuce      | Mayonnaise      |                              |
| Pickles      | Ranch           |                              |
| Tomatoes     |                 |                              |
| Onion        |                 |                              |
| BBQ          |                 |                              |
| Buffalo      |                 |                              |

## DELI MEATS & CHEESES

Limit 2 meats & 1 cheese per customer

\*\*Bacon can be added for an additional charge

- Ham \$3.75
- Tuna \$1.50
- Turkey \$3.25
- Roast Beef \$4.50
- Bacon \$1.10\*\*

## WEEKLY SPECIALS

- Monday | Pasta Bar
- Tuesday | Taco Tuesday
- Wednesday | Wing Wednesday
- Thursday | Southern Meal
- Friday | Taste of Asia

3rd Quarter



Friday, Aug. 15  
5-7 p.m.

## Birthday Meal

For birthdays in July, August & September

Celebrate your special day with a festive Disney-themed birthday meal! Enjoy fun games, exciting prizes and a magical atmosphere perfect for making birthday memories. Don't forget, those with eligible birthdays are open to bring one guest to share their special meal with!

Grissom

**DINING FACILITY**

BLDG. 624 | 226-3997

 @MisawaGrissomDFAC

**Meals are FREE  
for ESM customers.**

### CASH PAYING CUSTOMERS

A surcharge of 33% will be applied to the total price.  
Menu is subject to change.

DoD MWR  
Digital Libraries



2025 DoD MWR Summer Reading  
**Program Closing Party**

**LEVEL  
UP**  
AT YOUR  
**LIBRARY**

**Tuesday, Aug. 5**  
**10 a.m.–Noon**

Join us to celebrate the end of the 2025 Summer Reading Program with a scavenger hunt, LEGO® challenge, sidewalk coloring and more PRIZES!



**STEM PROGRAMS**

**LEGO® Club** | Saturday, Aug. 2 | 3–4:30 p.m. | All Ages  
**Kid K'Nex®** | Wednesday, Aug. 6 | 10:30–11:30 a.m. | Ages 3+  
**Homeschool STEM Day** | Wednesday, Aug. 13 | 11 a.m.–Noon  
**Ozobot®** | Wednesday, Aug. 20 | 3:30–4:30 p.m. | Ages 7+

**Toddler Play Group**

Thursdays | 10:30–11:30 a.m. | Ages 1–5

**Pokémon™ TCG Club**

Saturday, Aug. 9 & 23  
11 a.m.–4 p.m. | All Ages

**DoD MWR Digital Libraries**

Take advantage of the DoD MWR Digital Libraries at <https://daf.dodmwrlibraries.org/> to prepare for back to school! It has a vast array of learning resources.

**Weekly Story Time**

Tuesdays | 10:30–11 a.m.

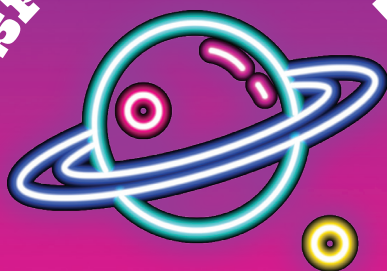
**Library Closure**

**Tuesday, Aug. 5 | CLOSED 10 a.m.–1 p.m.**  
Due to the Summer Reading Program Closing Party  
**Monday, Sept. 1 | Labor Day**

*Overstreet Memorial*  
**LIBRARY**

BLDG. 629 | 226-4083  
f @MisawaBaseLibrary

# SPECIAL EVENTS



## NATIONAL BOWLING DAY

Saturday, Aug. 9

Dollar Day | 11 a.m.–11 p.m.

Celebrate National Bowling Day with unbeatable \$1 deals the whole family can enjoy! Have a blast with \$1 games, shoe rentals, fries, drinks and hot dogs. Don't miss this one-day celebration packed with strikes, snacks and serious savings!

## PINS & PRIZES

Saturday, Aug. 16 | 6–9 p.m.

Raffle Drawings | 7–9 p.m.

All Ages

Grab your friends and family and get ready for a fun-filled night of strikes, spares and PRIZES! Participants will receive a FREE raffle ticket upon entry for a chance to WIN some exciting prizes. There is a minimum of ten participants needed for the prize giveaway and winners must be present to claim their prize. This is open to all patrons, however explicit and adult-themed music and videos may be played.

## HYPERBOWLING BLAST

Sunday | 11 a.m.–7 p.m.

Monday–Thursday | 11 a.m.–9 p.m.

Friday & Saturday | 11 a.m.–11 p.m.

Come experience the future of bowling! Stop by and try out our brand-new HyperBowling™ lanes, where interactive features, moving targets and exciting challenges make every roll an adventure. Whether you're a seasoned pro or a first timer, it's a fun, high-tech twist on the classic game that you won't want to miss!

## KIDS BOWL FREE

Now–Sunday, Aug. 31

11 a.m.–5 p.m.

Ages 15 & under

Two FREE Games Every Day

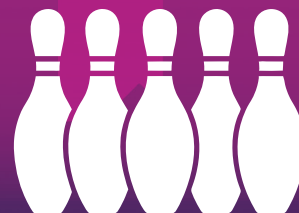
Kids Bowl FREE is back for another summer! Sign up and your child can bowl two games every day for FREE. Scan the QR code below to register your child at Walmsley Bowling Center.

Family Pass | \$32.95

Up to four family members, ages 16+ can enjoy two games every day until Sunday, Aug. 31. Purchase in the Kids Bowl Free app to sign up!

- HyperBowling and shoe rentals are not included

Sign-up




# WALMSLEY

# Bowling

BLDG. 627 | 957-1554

 @MisawaWalmsleyBowlingCenter

 @Walmsley.Bowling

## Recurring Events



### RED PIN TUESDAY

Tuesdays | 11 a.m.–9 p.m.  
\$1 games & \$1 shoe rentals

If you get a strike with a red headpin, you win a FREE game! For verification, you must notify the desk that you have a red headpin prior to rolling the frame.

### HYPER THURSDAY

Thursdays | 11 a.m.–9 p.m.  
\$10 per hour

Turn your average Thursday into a blast with HyperBowling™ discounts! Get in on the fun, save big and roll into the weekend early with this thrilling, high-tech bowling twist!

### KIDS EAT FREE NIGHT

Thursdays | 5–8:30 p.m.  
Ages 12 & under

Take the night off from cooking dinner and bring the family to Bumpers Fusion Diner! Get a FREE kids meal for each purchased adult combo meal.

### LASER STORM BOWLING

Fridays & Saturdays | 7–11 p.m.

We turn the lights down and the music up! Grab your friends and “glow” bowling while requesting your favorite songs! This is open to all patrons, however explicit and adult-themed music and videos may be played.

### AIRMEN'S ALLEY

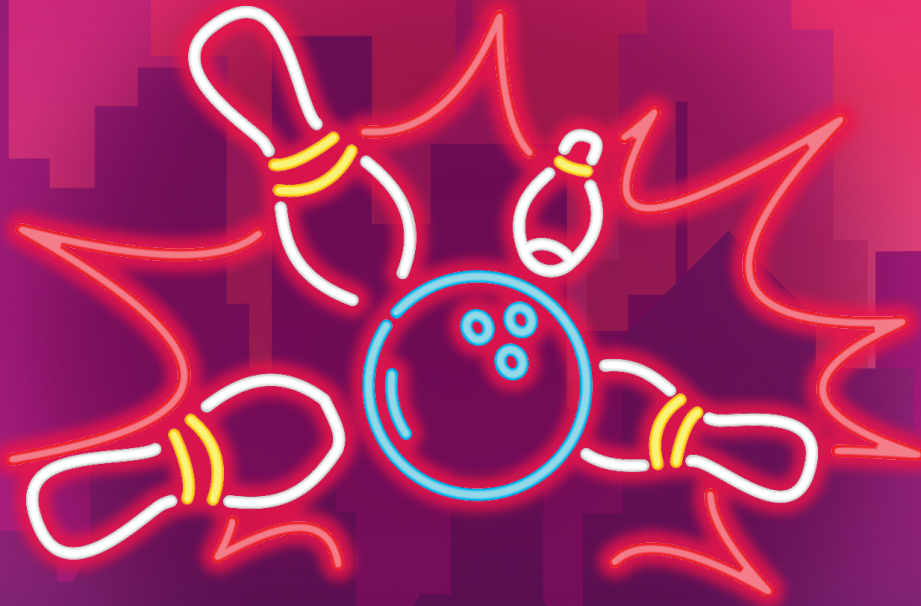
Fridays & Saturdays | 7–11 p.m.

Ages 18+ | E6 & below only

E1-4 | \$15

E5-6 | \$25

Enjoy unlimited games and shoe rentals all night long! You must show your ID to bowl.



# bowling

# CENTER

## Closures

Tuesday, Aug. 5 | Maintenance Day | CLOSED



# BASE CHAMPIONSHIP

**Saturday, Aug. 23–Sunday, Aug. 24**

**Tee Time | 6:30 a.m.**

**Members | \$60**

**Non-Members | \$80**

**Host Nation Local Nationals | \$90**

**Advance sign up is required at the Pro Shop counter by 6 p.m. on Tuesday, Aug. 19**

Players must provide GHIN #, handicap or at minimum (3) 18-hole scores at time of signing up.

Individual  
Stroke Play

Flights  
based on  
player's  
handicaps

Gross and  
net prize payouts  
will be based  
on individual  
flight size



*Gosser*  
**GOLF COURSE**

**BLDG. 1464 | 957-1563**

**f @MisawaGosserGolfCourse&LakeviewGrille**



Like & follow us on Facebook  
for updates on events.

## Flag Football

Monday, Aug. 25–Friday, Oct. 24

Ages 5–8 | 4:30–5:30 p.m.

Ages 9–14 | 5:30–6:30 p.m.

Youth Center Field E

Sign-up | NOW–Monday, Aug. 11

\$45 for the season

- Scheduling is subject to change depending on participation
- Up-to-date vaccines are required (including 2024 flu vaccine)
- Up-to-date sports physical is required for the entire season

## Volunteer Coaches Needed

Coaching Youth Sports is a fantastic opportunity to positively impact Team Misawa, improve athletic skills in youth, earn volunteer hours, and receive an LOA for your dedication! **Volunteer coaches will have their child's registration fees waived, and those without children will receive a \$50 FSS gift card at the end of the season.**

We are looking for volunteer coaches for all sports, including basketball, volleyball, flag football, soccer, tee-ball and softball. Visit the Lunney Youth Center or give us a call at 226-3220 to become a volunteer coach today!

## Instructors Wanted

Do you have any skills to impart on the youth of Misawa Air Base? Whether it's sports, arts, guitar, drum, keyboard, or anything in between, we'd love to have you join our team and help inspire the next generation! Visit the Lunney Youth Center or give us a call at 226-3220 to become an instructor today!

*Youth Programs*

# SPORTS & INSTRUCTIONALS

BLDG. 112 | 226-3220


 @MisawaYouthSports

# LUNNEY

*Youth Center*

BLDG. 626 | 226-2792

Ages 9–12

 @MisawaLunneyYouthCenter

Lunney Youth Center events will take place at the Misawa Teen Center, BLDG. 626, Floor 2, until further notice.

## *Bring a Friend Friday*

**Friday, Aug. 29**

**FREE | Non-Members**



**Youth | Ages 9–12**

Youth members can bring a non-member friend to the Misawa Teen Center on the last Friday of each month for FREE (one friend per member, and only once). It's a great opportunity to explore what the Misawa Teen Center has to offer, such as gaming consoles, 3D printing, movie theater, open recreation, clubs and more.

**Teens | Ages 13–18**

Teen members can bring a non-member friend to the Misawa Teen Center on the last Friday of each month for FREE (one friend per member, and only once). It's a great opportunity to explore what the Misawa Teen Center has to offer, such as gaming consoles, 3D printing, movie theater, open recreation, clubs and more. Plus, we'll be celebrating the month's birthdays with pizza!

## *Rolling Back to School*

**Friday, Aug. 15**

**2:15–4:30 p.m.**

**Lunney Youth Center Gym**

**FREE | Members Only | Ages 9–18**



Get ready to roll, laugh and snack at the ultimate skate party! Cruise around the gym to awesome music and load up on tasty snacks and drinks. It's all about good vibes, cool moves and nonstop fun with friends!

- Sign up through CYPBMS, limited spots available

BLDG. 412 | 226-2266 | Ages 5–12

 @MisawaCheliSchoolAgeCare

# CHELI

*School Age Care*



## *Back to School Picnic Bash*

**Friday, Aug. 15**

**Starts | 10 a.m.**

**Lunch | 11:30 a.m.–Noon**

**Members Only**

**Cheli SAC Playground**

A day of sunshine, laughter and connection—let's kick off the school year with a breeze and a smile! Join us at the Back to School Picnic Bash for fun-filled activities, good food and a chance to reconnect with friends and families before the school year begins.

# MISAWA Teen Center



## Back-to-School Shopping

**Monday, Aug. 11**  
2-5 p.m.  
Meet at MTC  
FREE | Members Only

Let's go shopping! Teens will have the opportunity to explore the latest styles, school essentials and everyday must-haves to start the school year off right. Come with friends, browse your favorite brands and make back-to-school shopping fun and easy!

- Sign up through CYPBMS, limited spots available

## Ceramic Painting

**Tuesday, Aug. 5**  
1-5 p.m.  
\$20 Members | \$25 Non-Members

Let your creativity flow at the Misawa Teen Center! Pick your piece, choose your colors and design something totally unique in a relaxed, fun atmosphere. No experience needed, just bring your imagination and hang out with friends while you paint!

- Sign up through CYPBMS, limited spots available

Sign-up



CYPBMS Parent Portal

# YOIKO

## Child Development Center

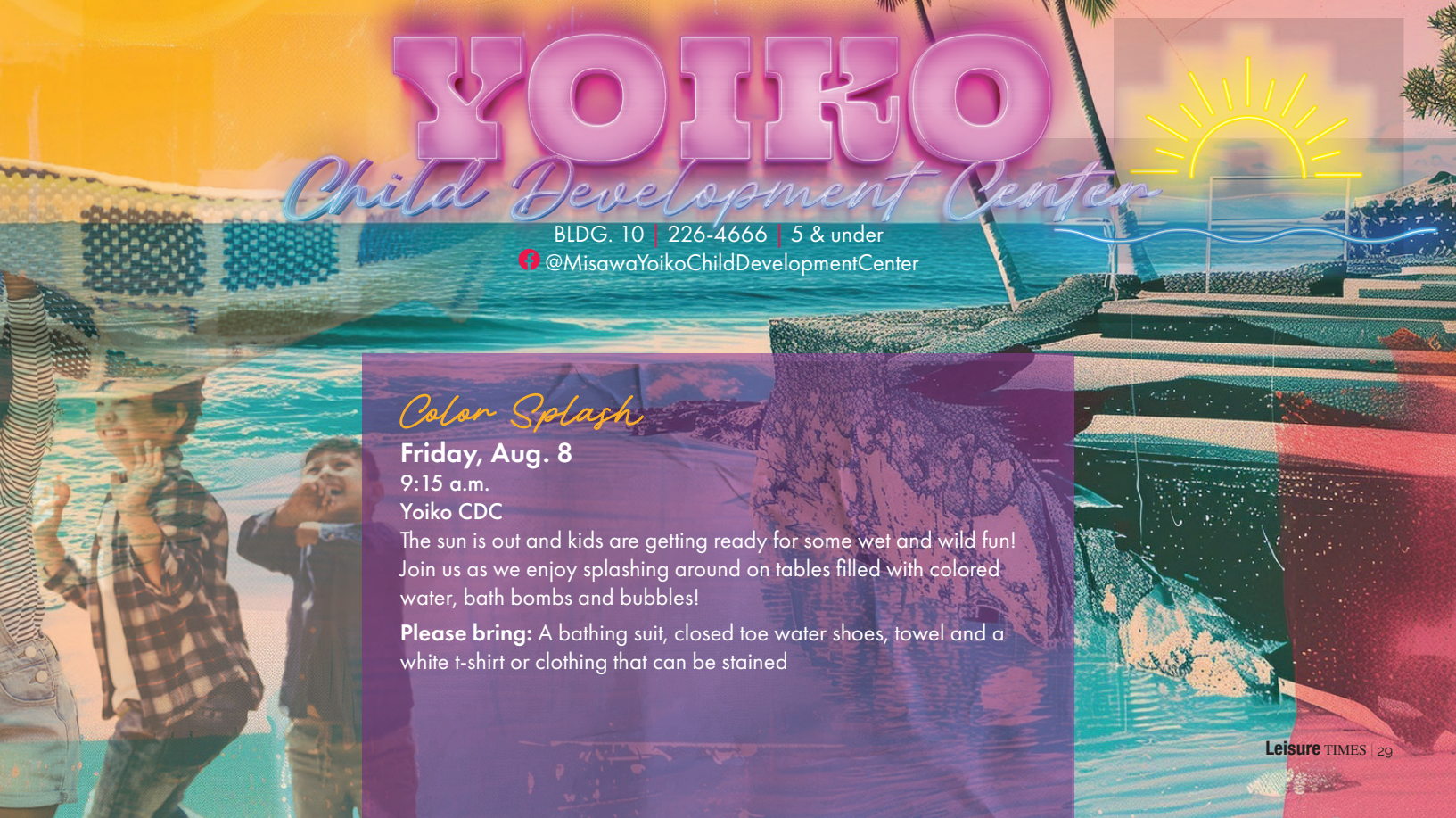
BLDG. 10 | 226-4666 | 5 & under  
@MisawaYoikoChildDevelopmentCenter

## Color Splash

**Friday, Aug. 8**  
9:15 a.m.  
Yoiko CDC

The sun is out and kids are getting ready for some wet and wild fun! Join us as we enjoy splashing around on tables filled with colored water, bath bombs and bubbles!

**Please bring:** A bathing suit, closed toe water shoes, towel and a white t-shirt or clothing that can be stained



Friday Night

# BINGO



Fridays | Aug. 8 & 22  
Doors Open | 6 p.m.  
Starts | 7:30 p.m.  
Misawa Club | BLDG. 485  
Pre-Sale | \$15  
Day of Event | \$20  
Ages 18+

Grab your friends and enjoy some Friday night fun with bingo!  
Order drinks from the Club to enjoy while you play to win CASH PRIZES!

- Purchase Bingo books at the Community Commons
- No outside food or drinks allowed

## COMMUNITY COMMONS

BLDG. 1006, Bay 1 | 226-4128

 @MisawaCommunityCommons

## TAIKO DRUMMING CLASS

Wednesdays

5–6 p.m. | Beginners, Ages 10+

6–7 p.m. | Intermediate

7–8 p.m. | Advanced

Mokuteki Ballroom

\$15 per person

Sign up by 4 p.m. on Mondays

Taiko drumming is a traditional Japanese art form that combines powerful rhythms, dynamic movement and intense energy. What better way to truly embrace the rich culture while living in Japan!



# Boarding Services Per Night

Dog Boarding | \$25 Cat Boarding | \$20 Daycare | \$17/Day

Please inform our staff if your pet needs to be quarantined. Additional pet in same kennel is 50% off regular boarding rate.

## Grooming Packages

Includes hair cut, bath, nail trim, ear cleaning, tooth brushing and gland expression.

**SMALL | \$55**

**MEDIUM | \$60-65**

**LARGE | \$75-90**

**EXTRA LARGE | \$100**

Scan the QR code  
for specific breed prices



## Additional Boarding Services

Early Drop-Off | Late Pick-Up | \$20

Outside Business Hours  
Drop-Off | Pick-Up | \$35

Playtime with  
Caretaker (15 min.) | \$6

Walk (15 min.) | \$6

Walk (30 min.) | \$15

Yappy Hour | \$7/Day

Food | \$5/Day



# MISAWA Pet Kennel

BLDG. 756 | 226-2228 |  @MisawaPetKennel

### Hours of Operation

MONDAY-FRIDAY

10 a.m.-1:30 p.m. & 2:30-6 p.m.

SATURDAY

10 a.m.-2 p.m.

Closed Sundays & holidays



## Sollars Elementary School

BLDG. 80 | 226-3933

*Sneak Peek*  
Friday, Aug. 15 | 3 p.m.

Families and students can come and visit their classrooms for the school year.



## Edgren Middle High School

BLDG. 746 | 226-4377

*Sneak Peek*  
Friday, Aug. 15 | 2 p.m.

# D

# O

# D

# E

# E



*Back to School Night*  
Thursday, Sept. 11 | 5 p.m.

Don't miss out on this opportunity that provides families with the chance to meet their child's teacher and tour the school.

*Open House*  
Wednesday, Sept. 10 | 4 p.m.

Subscribe to the  
**LEISURE TIMES**  
MAGAZINE



Get the Leisure Times delivered to your P.O. Box every month for FREE! Scan the QR code to sign up!



# BANZAI AWARD



## 35<sup>TH</sup> FORCE SUPPORT SQUADRON

- B – BACKING THE WING:** Going above and beyond in backing/supporting the Wing.
- A – ADAPTABLE:** Demonstrating adaptability in tackling challenges.
- N – NOT COMPLACENT:** Avoiding complacency and contributing innovative ideas or processes.
- Z – ZEAL:** Displaying great energy and enthusiasm to accomplish the mission and/or task.
- A – ATTENTIVE:** Paying close attention to customer needs and providing the best Force Support.
- I – INFLUENCE:** Influencing positive change and personal and professional growth for others, the Squadron and/or the community.



**Military | SrA Edwin Jimenez Reyes**  
Storeroom Manager | Sustainment Services Flight



**Civilian | Siena Ramirez**  
Recreation Aide | Community Service Flight

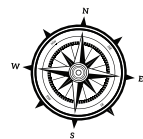
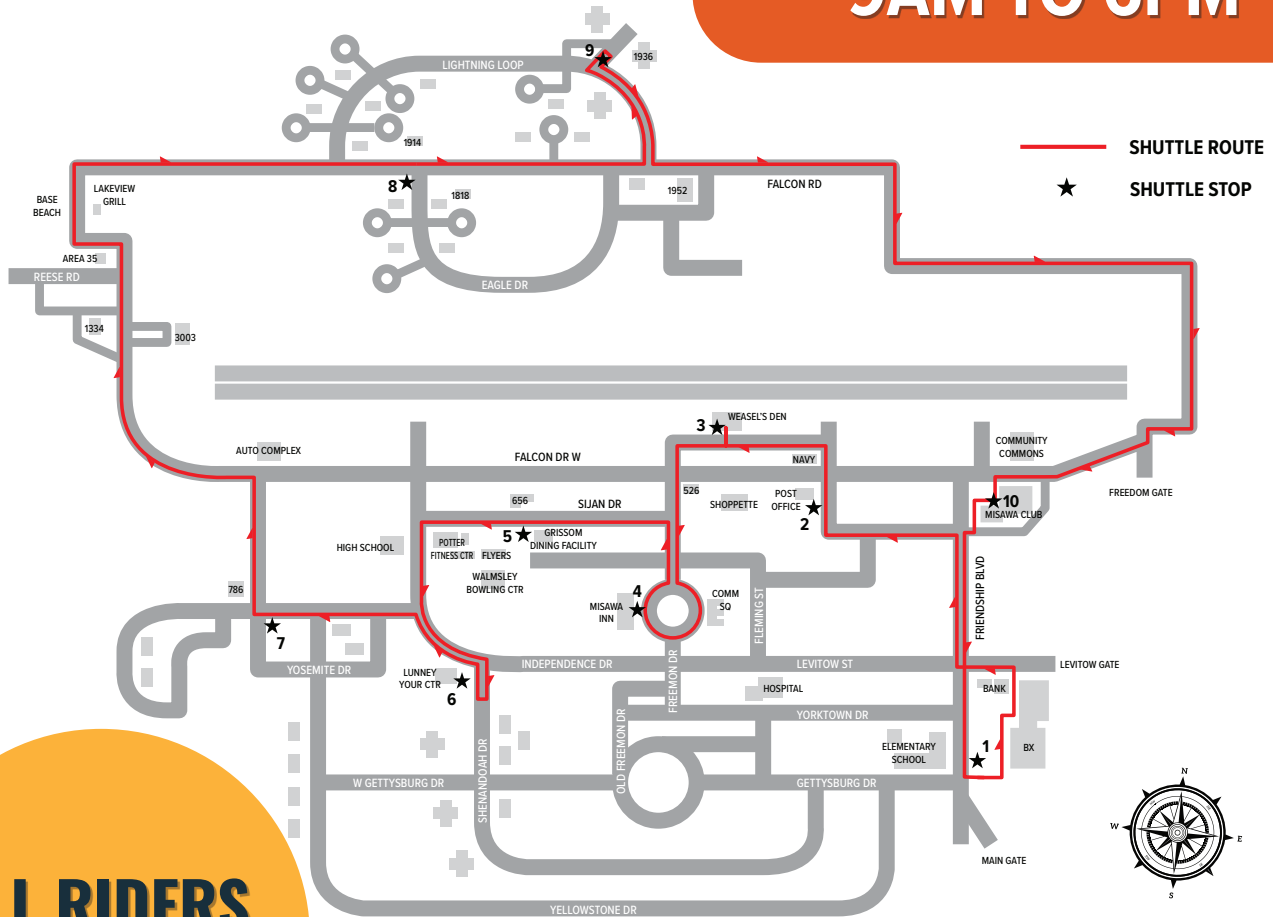


**Team | Misawa Club**  
Community Services Flight



# BASEWIDE SHUTTLE SERVICE

AVAILABLE MONDAY - FRIDAY  
9AM TO 6PM



**ALL RIDERS WELCOME!**

CONTACT GROUND TRANSPORTATION FOR ASSISTANCE

 315-226-3328



For real-time shuttle tracking download the BusWhere App

Registration must be completed using a government-issued email address.

(Dependents may use their sponsors email address, as multiple accounts can be tied to one address.)

# FSS Directory

**35 FORCE SUPPORT SQUADRON  
COMMAND SECTION**  
BLDG. 653, RM. 104  
DSN: 226-3008 | Cell: 0176-77-3008  
Mon-Fri 7:30 a.m.-4:30 p.m.

**35 FSS MARKETING & PUBLICITY**  
BLDG. 656, RM. 1435  
DSN: 226-9272 | Cell: 0176-77-9272  
Mon, Tues, Thurs & Fri 7:30 a.m.-4:30 p.m.  
Print Shop (register) 8 a.m.-4 p.m.  
Closed weekends, federal holidays  
& every Wednesday for training

**35 FSS NAF HUMAN RESOURCES OFFICE**  
BLDG. 656, RM. 1460  
DSN: 226-3108 | Cell: 0176-77-3108  
Mon-Fri 9 a.m.-3 p.m.  
Closed the third Thursday of every  
month for training, weekends &  
federal holidays

**CIVILIAN PERSONNEL SECTION**  
BLDG. 656, 2ND FLOOR  
DSN: 226-4621 | Cell: 0176-77-4621  
Mon-Fri 9 a.m.-3 p.m.  
Closed the third Thurs of every month  
for training, weekends, FW Down Days  
& federal holidays

**MANPOWER & ORGANIZATION**  
BLDG. 653, RM. 2307  
DSN: 226-5287 | Cell: 0176-77-5287  
Mon-Fri 7:30 a.m.-4:30 p.m.  
Closed the third Thurs of every month  
for training, weekends, FW Down Days  
& federal holidays

**MILITARY PERSONNEL SECTION**  
BLDG. 653, RM. 101  
DSN: 226-4002 | Cell: 0176-77-4002  
**Customer Support**  
Mon-Fri 9 a.m.-3 p.m.  
Closed weekends & federal holidays &  
the first Thurs each month

**NAF ACCOUNTING OFFICE**  
BLDG. 653, 2ND FLOOR  
DSN: 226-4360 | Cell: 0176-77-4360  
Mon-Fri 7:30 a.m.-4:30 p.m.  
**Private Organizations:** 226-2777

**AREA 35**  
Paintball, Archery & Axe Throwing  
Third Fri of every month 6-9 p.m.  
First Sat of every month 10 a.m.-5 p.m.  
Mon-Sat By Reservation  
Closed Sun

**ARTS & CRAFTS CENTER  
SKILLS & TRADES CENTER | BLDG. 645**  
DSN: 226-4279 | Cell: 0176-77-4279  
**Retail & Ceramics**  
Tue-Sat 10 a.m.-6 p.m.  
Closed Sun, Mon & federal holidays  
**Frames & Graphics**  
Tue-Sat 10 a.m.-2:30 p.m. & 3:30-6 p.m.  
Closed Sun, Mon & federal holidays  
**Wood Shop**  
Tue-Fri Noon-2:30 p.m. & 3:30-8 p.m.  
Sat 10 a.m.-Noon & 1-6 p.m.  
Closed Sun, Mon & federal holidays

**AUTO COMPLEX**  
**Auto Hobby Center | BLDG. 767**  
DSN: 226-4654 | Cell: 0176-53-5181  
Emergency/towing: 080-1651-9308  
Tues-Sat 9 a.m.-6 p.m.  
Closed Sun-Mon & federal holidays  
**Pit Stop Garage | BLDG. 965**  
DSN: 226-9486 | Cell: 0176-53-5181  
Mon-Fri 7:30 a.m.-4:45 p.m.  
Closed weekends & federal holidays

**BASE BEACH & BOATHOUSE**  
Gate open | 5 a.m.-8 p.m.  
Rentals | Sat & Sun 10 a.m.-5 p.m.

**CHELI SCHOOL AGE CARE**  
BLDG. 412  
DSN: 226-2266 | Cell: 0176-77-2266  
Mon-Fri 6:30 a.m.-5:30 p.m.  
Closed weekends & federal holidays  
FW Down Days reservation only

**COMMUNITY COMMONS**  
BLDG. 1006, BAY 1  
DSN: 226-4128 | Cell: 0176-77-4128  
Mon-Fri 7 a.m.-5 p.m.  
Sat-Sun 10 a.m.-6 p.m.  
FW Down Days 10 a.m.-5 p.m.  
Closed on U.S. Federal holidays  
**Banzai's Playground | Bldg. 1006, Bay 2**  
Mon, Tue, Thu, Fri 8 a.m.-4:30 p.m.  
Wed 11 a.m.-4:30 p.m.  
Sat, Sun & FW Down Days 10 a.m.-5 p.m.  
Closed on U.S. Federal holidays

**EDUCATION & TRAINING SERVICES**  
BLDG. 653, RM. 203  
DSN: 226-4201 | Cell: 0176-77-4201  
Mon, Tues & Thurs 8 a.m.-Noon, 1 p.m.-4 p.m.  
Wed 9 a.m.-Noon, 1-4 p.m.  
Fri 8 a.m.-Noon  
Closed weekends & federal holidays

**FAMILY CHILD CARE**  
BLDG. 656, RM. 1457  
DSN: 226-2273 | Cell: 0176-77-2273  
Mon-Fri 7:30 a.m.-4:30 p.m.  
Closed weekends, FW Down Days &  
federal holidays

**FREEDOM FITNESS CENTER**  
BLDG. 1962  
DSN: 226-9987 | Cell: 0176-77-9987  
Mon-Fri 8 a.m.-5 p.m.  
Federal holidays, FW Down Days,  
exercises & the 1st Thurs each month  
24 hour access with card

**GOSSER GOLF COURSE**  
BLDG. 1464  
DSN: 957-1563 | Cell: 080-1857-0087  
**Golf Shop**  
Mon-Fri 6:45 a.m.-6 p.m.  
Sat-Sun 5:45 a.m.-6 p.m.  
**Driving Range**  
24 hrs a day, 7 days a week  
Closed Tuesdays 6-10 a.m. for maintenance  
Purchase tokens during Pro Shop hours  
All hours are weather permitting

**HIMBERG POOL**  
BLDG. 625  
DSN: 226-7665 | Cell: 0176-77-7665  
Call ODR for Fish Bowl and PT reservations  
Mon, Wed, Fri 6 a.m.-7 p.m.  
Tues, Thurs 8 a.m.-7 p.m.  
Sat 8 a.m.-4 p.m.  
Closed Sat Noon-1 p.m.  
FW Down Days 10 a.m.-5 p.m.  
Closed the last Wed of the month, Sun, US &  
select JP federal holidays

**IRON HAND COMMUNITY FITNESS**  
BLDG. 1006, BAY 3  
DSN: 226-3982  
24 hour access with card only

**LEFTWICH PARK**  
Near Security Hill, open daily, dawn to dusk  
DSN: 226-9378 | Cell: 0176-77-9378  
Call ODR to make a reservation

**YOUTH SPORTS & INSTRUCTIONALS**  
BLDG. 112  
DSN: 226-3220 | Cell: 0176-77-3220  
Mon, Wed, Thurs, Fri 2:45-5:30 p.m.  
Tuesday 1:45-5:30 p.m.  
Closed weekends, FW Down Days &  
federal holidays  
**Summer Hours (June 11-Aug. 15)**  
Mon-Fri 1-5:30 p.m.  
Closed weekends, FW Down Days &  
federal holidays

**MILITARY & FAMILY READINESS CENTER**  
BLDG. 656  
DSN: 226-4735 | Cell: 0176-77-4735  
Mon, Tue, Wed, Fri 8 a.m.-4 p.m.  
Thu 8 a.m.-2 p.m.  
Closed federal holidays, weekends & the  
3rd Thurs each month

**MISAWA CLUB**  
BLDG. 485/486  
Cashiers' Cage: 226-9122  
Catering Reservations: 226-9124  
**Catering Office Hours**  
Mon-Fri 8 a.m.-4:30 p.m.  
Catering requests:  
misawacatering@gmail.com  
**Cashiers' Cage Hours**  
Mon-Fri 8:30 a.m.-5 p.m.  
Closed on weekends  
**Venture Amusement Hours**  
Mon 8 a.m.-6 p.m.  
Tue-Thu 8 a.m.-10 p.m.  
Fri-Sat 8 a.m.-2 a.m. the next day  
Sun 9 a.m.-3 p.m.  
Closed on federal holidays

**MISAWA INN**  
BLDG. 670  
DSN: 222-0282 | Cell: 0176-66-0282  
24 hours a day, 7 days a week

**MISAWA ITT**  
BLDG. 485  
DSN: 226-3555 | Cell: 0176-77-3555  
Mon-Fri 9 a.m.-4 p.m.  
Closed weekends & federal holidays

**MISAWA PET KENNEL**  
BLDG. 756  
DSN: 226-2228 | Cell: 0176-77-2228  
Mon-Fri 10 a.m.-6 p.m.  
Sat 10 a.m.-2 p.m.  
Closed every day from 1:30-2:30 p.m.  
Closed Sun & federal holidays

**MISAWA POST OFFICE**  
BLDG. 519  
DSN: 226-3492 | Cell: 0176-53-5181  
Closed Sun & federal holidays  
**Pick Up Window**  
Mon-Fri 10 a.m.-6 p.m.  
Sat & FW Down Days 10 a.m.-4 p.m.  
**Customer Service**  
Mon-Fri 10 a.m.-5 p.m.  
**Official Mail Center**  
Mon-Fri 10 a.m.-4 p.m.  
Finance (includes shipping)  
Mon-Fri 10 a.m.-5 p.m.

**MISAWA TEEN CENTER &  
LUNNEY YOUTH CENTER**  
BLDG. 626  
DSN: 226-2792 | Cell: 0176-77-2792  
Mon-Fri 1:30-5:30 p.m.  
Hours vary on event nights  
Closed weekends, federal holidays  
& FW Down Days

**OUTDOOR RECREATION CENTER**  
BLDG. 486  
DSN: 226-9378 | Cell: 0176-77-9378  
Mon, Tues, Thu & Fri 9 a.m.-6 p.m.  
Sat 8 a.m.-2 p.m.  
FW Down Days 10 a.m.-5 p.m.  
Closed Sun, Wed & federal holidays

**OVERSTREET MEMORIAL LIBRARY**  
BLDG. 629  
DSN: 226-4083 | Cell: 0176-77-3068  
Mon-Sat 10 a.m.-6 p.m.  
Closed Sundays & federal holidays

**PROFESSIONAL DEVELOPMENT &  
FIRST TERM AIRMAN CENTER**  
BLDG. 653, RM. 209  
DSN: 226-7829 | Cell: 0176-77-7829  
Mon-Fri 7:30 a.m.-4:30 p.m.  
(by appointment only)

**POTTER FITNESS CENTER**  
BLDG. 622  
DSN: 226-1964 | Cell: 0176-77-1964  
Mon-Fri 5 a.m.-10 p.m.  
Sat & Sun 8 a.m.-5 p.m.  
Federal holidays, FW Down Days & the 1st  
Thurs each month  
24 hour access with card

**THE LODGE**  
BLDG. 1482  
DSN: 226-9378 | Cell: 0176-77-9378  
Open for private reservations  
Noon-10 a.m. next day  
Call ODR to make a reservation  
**Tow Rope Operations**  
Jan.-March dependent on snowfall  
Mon-Fri Reservation only  
Sat 10 a.m.-3 p.m.  
Sun No Tow Rope operations, hillside  
open for Free Play

**WALMSLEY BOWLING CENTER**  
BLDG. 627  
DSN: 957-1554 | Cell: 0176-77-8255  
then dial 1-281-657-1554  
Sun 11 a.m.-7 p.m.  
Mon-Thu 11 a.m.-9 p.m.  
Fri & Sat 11 a.m.-11 p.m.  
Federal holidays Noon-7 p.m.  
Closed first Tuesday of the  
month for maintenance

**WEASELS' DEN**  
BLDG. 973  
Mon-Fri 5 a.m.-10 p.m.  
Sat, Sun & FW Down Days 8 a.m.-10 p.m.  
Closed select federal holidays  
Call ODR for Barn & Soccer Field reservations

**YOIKO CHILD DEVELOPMENT CENTER**  
BLDG. 10  
DSN: 226-4666 | Cell: 0176-77-4666  
Mon-Fri 6:30 a.m.-5:30 p.m.  
Closed weekends, federal holidays  
& FW Down Days

**AOMORI EATS**  
**Misawa Club | BLDG. 485**  
DSN: 226-5062 | Cell: 0176-77-5062  
Sunday Breakfast 9 a.m.-1:30 p.m.  
**Aomori Eats Lunch**  
Mon-Fri 10:30 a.m.-1:30 p.m.  
**Aomori Eats Dinner**  
Mon-Wed 4:30-8 p.m.

**BUMPERS FUSION DINER**  
**Walmsley Bowling Center | BLDG. 627**  
DSN: 957-1553 | Cell: 0176-77-8255  
then 1-281-657-1553  
Mon-Thu 6 a.m.-8:30 p.m.  
Fri 6 a.m.-10:30 p.m.  
Sat 8 a.m.-10:30 p.m.  
Sun 8 a.m.-6:30 p.m.  
Closed first Tuesday of the  
month for maintenance

**FALCON FEEDER DINING FACILITY**  
BLDG. 3262  
DSN: 226-1636 | Cell: 0716-77-1636  
Breakfast 6:30-8 a.m.  
Lunch 10:30 a.m.-1 p.m.  
Dinner 6-8 p.m.  
Closed weekends & federal holidays

**FIT PIT**  
**Potter Fitness Center | BLDG. 622**  
DSN: 957-1561 | Cell: 0176-77-8255  
then 1-281-657-1561  
Mon-Fri 7 a.m.-7 p.m.  
Closed first Thurs of every month  
at 5 p.m.

**FLIGHT KITCHEN DINING FACILITY**  
BLDG. 3262  
DSN: 226-3889  
Cell: 080-8207-0346  
24 hours a day, 7 days a week  
Limited to crew members and anyone  
in a flight status as crew member  
or passengers from 1:30-4 a.m.  
call 080-8207-0346.

**FLYERS**  
BLDG. 626  
24 hours a day, 7 days a week  
5:30 a.m.-9 p.m. | Full Menu  
9 p.m.-5:30 a.m. | Grab&Go Only  
DSN: 226-8255  
then 1-281-657-1555  
From a Japanese Phone: 0176-77-8255  
then 1-281-657-1555  
Closed second Mon of every month |  
5:30 a.m.-5:30 a.m. the next day

**GRISSOM DINING FACILITY**  
BLDG. 624  
DSN: 226-3997  
Breakfast Mon-Fri 5:30-8 a.m.\*  
Lunch Mon-Fri 10:30 a.m.-1:30 p.m.\*  
Dinner Mon-Fri 4:30-7:30 p.m.\*  
Midnight Meal Everyday  
10 p.m.-12:30 a.m.\*  
Brunch Sat-Sun 6:30 a.m.-1 p.m.\*  
Dinner Sat-Sun 5-7 p.m.\*  
\*Hours subject to change

**LAKEVIEW GRILLE**  
**Gosser Golf Course | BLDG. 1464**  
DSN: 957-1564 | Cell: 0176-77-8255  
then dial 1-281-657-1564  
Every day 10:30 a.m.-2 p.m.  
Closed third Mon of every month

**TANUKI'S**  
**Misawa Club | BLDG. 485**  
Wed-Sat 4:30-10 p.m.

**TOUCH & GO**  
**North Base | BLDG. 1953**  
Mon-Fri 6 a.m.-6 p.m.  
Sat 8 a.m.-2 p.m.  
Closed Sundays & federal holidays

**WILD WEASELS' BAR & GRILL**  
**Misawa Club | BLDG. 485**  
DSN: 226-5062  
Cell: 0176-77-5062  
Thurs-Sat 4:30-9 p.m.

FOOD

Tear here to hang on your fridge!

ADMINISTRATIVE

# AUGUST

SUN

MON

TUE

WED

THU

FRI

SAT

<p><b>3</b></p> <p><b>Bowling:</b> Hyperbowling Blast   Kids Bowl FREE <b>Club:</b> Breakfast Buffet <b>ITT:</b> Aomori Nebuta Festival</p>	<p><b>4</b></p> <p><b>Bowling:</b> Hyperbowling Blast   Kids Bowl FREE <b>MFC:</b> First Step Japanese</p>	<p><b>5</b></p> <p><b>Special Event:</b> Summer Reading Program Closing Party <b>Bowling:</b> Maintenance Day <b>Club:</b> Taco Tuesday <b>MFC:</b> Sponsorship Training   Work Life Balance <b>MTC:</b> Ceramic Painting</p>	<p><b>6</b></p> <p><b>Bowling:</b> Hyperbowling Blast   Kids Bowl FREE <b>Club:</b> Wing Wednesday <b>Com Com:</b> Taiko Drumming <b>Library:</b> Kid K'Nex <b>MFC:</b> Next Level Japanese <b>ODR:</b> Otsubo River Trek</p>	<p><b>7</b></p> <p><b>A&amp;C:</b> Cocktails &amp; Ceramics <b>Bowling:</b> Hyperbowling Blast   Kids Bowl FREE   Hyper Thursday <b>Club:</b> Kids Eat FREE Night <b>EDU:</b> MIITA   Military Testing <b>Library:</b> Toddler Play Group <b>MFC:</b> Japanese Cooking Class</p>	<p><b>8</b></p> <p><b>Bowling:</b> Laser Storm   Arimen's Alley   Hyperbowling Blast   Kids Bowl FREE <b>CDC:</b> Color Splash <b>Club:</b> Celebrity Bartender Night <b>Com Com:</b> Friday Night Bingo <b>MFC:</b> Misawa Mindfulness <b>ODR:</b> Dutch Oven Cooking Class <b>Pool:</b> Family Fun Night</p>	<p><b>1</b></p> <p><b>Special Event:</b> Comedy Show <b>Bowling:</b> Laser Storm   Arimen's Alley   Hyperbowling Blast   Kids Bowl FREE <b>Club:</b> Club Member Social <b>MFC:</b> Backpack Supply Event   Misawa Mindfulness <b>ODR:</b> 500k Cycling Challenge (cont.) <b>Pool:</b> Family Fun Night</p>	<p><b>2</b></p> <p><b>Bowling:</b> Laser Storm   Arimen's Alley   Hyperbowling Blast   Kids Bowl FREE <b>Club:</b> Dance Class <b>ITT:</b> Aomori Nebuta Festival <b>Library:</b> Lego Club <b>ODR:</b> Mt. Iwaki Hike   Shinrin-yoku &amp; Takigyo   Super Saturday</p>														
<p><b>10</b></p> <p><b>Bowling:</b> Hyperbowling Blast   Kids Bowl FREE <b>Club:</b> Breakfast Buffet <b>ODR:</b> Kitayamazaki (returns)</p>	<p><b>11</b></p> <p><b>Bowling:</b> Hyperbowling Blast   Kids Bowl FREE <b>MFC:</b> First Step Japanese <b>MTC:</b> Back-to-School Shopping <b>Youth Sports:</b> Flag Football (signs ups close)</p>	<p><b>12</b></p> <p><b>Bowling:</b> Hyperbowling Blast   Kids Bowl FREE   Red Pin Tuesday <b>Club:</b> Taco Tuesday <b>Library:</b> Weekly Story Time <b>MFC:</b> Japanese Cooking Class</p>	<p><b>13</b></p> <p><b>Bowling:</b> Hyperbowling Blast   Kids Bowl FREE <b>Club:</b> Wing Wednesday <b>Com Com:</b> Taiko Drumming <b>Library:</b> Homeschool STEM Day <b>ODR:</b> Campfire Stories   Odanai SUP Adventure</p>	<p><b>14</b></p> <p><b>Bowling:</b> Hyperbowling Blast   Kids Bowl FREE   Hyper Thursday <b>Club:</b> Kids Eat FREE Night <b>EDU:</b> MIITA   Military Testing <b>Library:</b> Toddler Play Group</p>	<p><b>15</b></p> <p><b>Special Event:</b> 3rd Quarter Birthday Meal <b>A&amp;C:</b> Brushes &amp; Beverages <b>Bowling:</b> Laser Storm   Arimen's Alley   Hyperbowling Blast   Kids Bowl FREE <b>LYC &amp; MTC:</b> Rolling Back to School <b>MFC:</b> Misawa Mindfulness <b>ODR:</b> Lightspeed Paintball <b>Pool:</b> Family Fun Night <b>SAC:</b> Back to School Picnic Bash</p>	<p><b>16</b></p> <p><b>A&amp;C:</b> Mini Monet <b>Bowling:</b> Laser Storm   Arimen's Alley   Hyperbowling Blast   Kids Bowl FREE   Pins &amp; Prizes <b>Club:</b> Dance Class <b>ODR:</b> Coastal Kayaking Adventure</p>	<p><b>17</b></p> <p><b>Bowling:</b> Hyperbowling Blast   Kids Bowl FREE <b>Club:</b> Breakfast Buffet <b>ITT:</b> Hachinohe Fireworks <b>ODR:</b> Unaccompanied Lake Towada SUP or Kayak</p>	<p><b>18</b></p> <p><b>Bowling:</b> Hyperbowling Blast   Kids Bowl FREE</p>	<p><b>19</b></p> <p><b>Bowling:</b> Hyperbowling Blast   Kids Bowl FREE   Red Pin Tuesday <b>Club:</b> Taco Tuesday   Family Member Social <b>Library:</b> Weekly Story Time</p>	<p><b>20</b></p> <p><b>Bowling:</b> Hyperbowling Blast   Kids Bowl FREE <b>Club:</b> Wing Wednesday <b>Com Com:</b> Taiko Drumming <b>Library:</b> 3D Pens <b>ODR:</b> Odanai Kayak Adventure</p>	<p><b>21</b></p> <p><b>Bowling:</b> Hyperbowling Blast   Kids Bowl FREE   Hyper Thursday <b>Club:</b> Kids Eat FREE Night <b>Club:</b> Trivia Night <b>EDU:</b> MIITA <b>MFC:</b> Toddler Play Group <b>MFC:</b> Resilience During Uncertainty</p>	<p><b>22</b></p> <p><b>Bowling:</b> Laser Storm   Arimen's Alley   Hyperbowling Blast   Kids Bowl FREE <b>Com Com:</b> Friday Night Bingo <b>MFC:</b> Misawa Mindfulness <b>Pool:</b> Pool Party</p>	<p><b>23</b></p> <p><b>Special Event:</b> Base Championship (begins) <b>A&amp;C:</b> Young Van Gogh <b>Bowling:</b> Laser Storm   Arimen's Alley   Hyperbowling Blast   Kids Bowl FREE <b>Club:</b> Dance Class <b>Library:</b> Maitsumi <b>ODR:</b> Pokémon TCG Club <b>ODR:</b> Shinrin-yoku &amp; Takigyo   Coastal Kayaking Adventure</p>	<p><b>24</b></p> <p><b>Special Event:</b> Base Championship (ends) <b>Bowling:</b> Hyperbowling Blast   Kids Bowl FREE <b>Club:</b> Breakfast Buffet</p>	<p><b>25</b></p> <p><b>Bowling:</b> Hyperbowling Blast   Kids Bowl FREE <b>MFC:</b> First Step Japanese <b>Youth Sports:</b> Flag Football (season begins)</p>	<p><b>26</b></p> <p><b>Bowling:</b> Hyperbowling Blast   Kids Bowl FREE   Red Pin Tuesday <b>Club:</b> Taco Tuesday <b>Library:</b> Weekly Story Time <b>MFC:</b> Language Exchange Night</p>	<p><b>27</b></p> <p><b>Bowling:</b> Hyperbowling Blast   Kids Bowl FREE <b>Club:</b> Wing Wednesday <b>Com Com:</b> Taiko Drumming <b>EDU:</b> SkillBridge <b>MFC:</b> Next Level Japanese <b>ODR:</b> Wheels After Work</p>	<p><b>28</b></p> <p><b>Bowling:</b> Hyperbowling Blast   Kids Bowl FREE   Hyper Thursday <b>Club:</b> Kids Eat FREE Night <b>EDU:</b> MIITA   Military Testing <b>Library:</b> Toddler Play Group</p>	<p><b>29</b></p> <p><b>Special Event:</b> Wing Sports Day <b>Bowling:</b> Laser Storm   Arimen's Alley   Hyperbowling Blast   Kids Bowl FREE <b>LYC &amp; MTC:</b> Bring a Friend Friday <b>MFC:</b> Misawa Mindfulness <b>ODR:</b> Lake Towada Kayak <b>Pool:</b> Family Fun Night</p>	<p><b>30</b></p> <p><b>Bowling:</b> Laser Storm   Arimen's Alley   Hyperbowling Blast   Kids Bowl FREE <b>Club:</b> Dance Class <b>ITT:</b> Tanbo Art &amp; Kokeshi Painting <b>ODR:</b> Night Kayaking</p>	<p><b>31</b></p> <p><b>Bowling:</b> Hyperbowling Blast   Kids Bowl FREE (ends) <b>Club:</b> Breakfast Buffet <b>ODR:</b> 500k Cycling Challenge (ends)</p>



*International Meteor Show & STRONGMAN COMPETITION*

Sunday, Sept. 7  
During Air Fest

Tear here to hang on your fridge!

# DORM WI-FI



UNLIMITED PLANS STARTING AT \$55.95/MO



Allied Telesis



SSID: Allied Telesis WiFi

## FAST & EASY SIGN-UP

- ✓ UNLIMITED DATA USAGE
- ✓ TRUE GIGABIT FIBER SERVICE FROM WIRED PORT
- ✓ NO INSTALLATION FEES
- ✓ NO CONTRACT COMMITMENTS
- ✓ NO ADDITIONAL EQUIPMENT NEEDED
- ✓ CHOOSE FROM SEVERAL PLANS

USE YOUR ACCOUNT EVERYWHERE ALLIED TELESIS WI-FI IS AVAILABLE !

For More Information, Call Us At: 03-6868-2300 or +1-415-692-8300

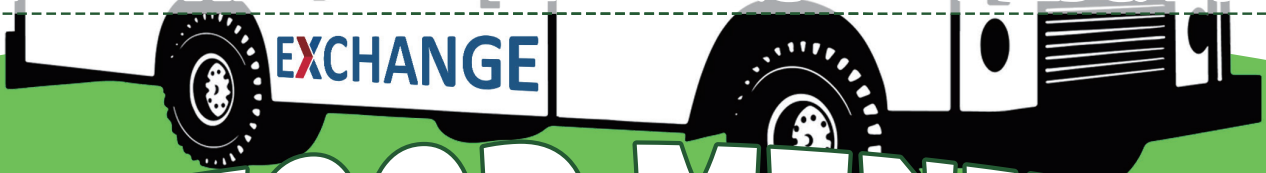
*Paid Ad. No Federal endorsement of advertiser intended.*

# EXCHANGE FOOD TRUCK COMING TO NORTH BASE

WE'RE EXCITED TO ANNOUNCE THAT OUR EXCHANGE  
MOBILE FOOD TRUCK WILL BE SERVING THE NORTH BASE COMMUNITY

**EVERY THURSDAY FROM 1700 TO 1900!**

- SERVICE WILL CONTINUE WEEKLY DURING THESE HOURS
- YOU'LL FIND US IN THE PARKING LOT OF BLDG. 1952



## FOOD MENU

• PERSONAL PAN PIZZAS



• BENTOS

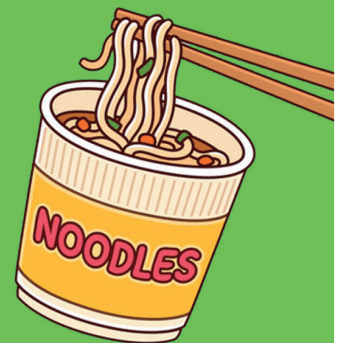


• ASSORTED SANDWICHES & SALADS

• BURRITOS

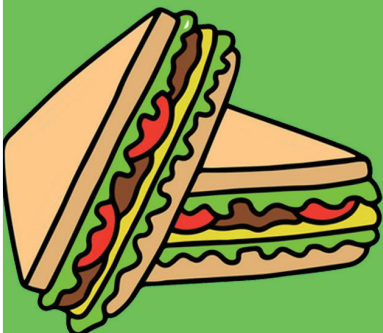


• CUP NOODLES



• PACKED SANDWICHES

• SODAS AND CHIPS



  
EXCHANGE

EXPRESS

# Let us handle ALL OF YOUR CAR NEEDS!

## Car Rental

¥4,000-

\*Yellow Plate 12hrs

Ask About Our Paint  
and Body Work

- ▶ Used Car Sales
- ▶ Repair
- ▶ U.S. Forces Car Insurance
- ▶ Towing available ON BASE
- ▶ Free Title Transfer
- ▶ Road Tax
- ▶ Vehicle Junking

\*Let us know if you live off base.



### Used Car Center & Insurance

Commercial: 0176-53-5959

Monday-Friday | 8:30 a.m. - 5:30 p.m.

Saturday | 8:30 a.m. - 2 p.m.



### Lucky Car Insurance


Bldg. 653, Room 126

### Lucky's Used Car Center


6-110-5, Okamisawa, Misawa, Aomori

Paid advertisement. No federal endorsement of advertiser(s) intended.

Moving into an  
**Off-Base House??**  
Looking for stable  
**Internet Provider!?**



**WOW!**  
**Easy Sign-up  
Online!**



**HeroNet**  
Toll Free 0120-711-566  
From US 011-81-176-53-5136  
helpdesk@heronet.jp

**Home Internet/Mobile Hotspot/SIM**

Paid advertisement. No federal endorsement of advertiser(s) intended.

# Sponsorship & Advertising Opportunities on Misawa Air Base!

With a population of **over 11,000**, our community enjoys the many opportunities to explore Japan and the Pacific region. **Advertise your business and establish brand awareness** by advertising on Misawa Air Base!

Visit [35fss.com/ads](http://35fss.com/ads)  
to learn more.



Save the Date

# International Motor Show



SUNDAY, SEPT. 7  
DURING AIR FEST

## STRONGMAN COMPETITION

35 FSS / FSK  
UNIT 5019, APO, AP 96319-5019