

MISAWA FORCE SUPPORT SQUADRON

LEISURE

T I M E S



OCTOBER
2025

FESTS

FESTS



FRIDAY, OCT. 24

EFMP Only | 4:30–5 p.m.

Open to All | 5–7 p.m.

BX Parking Lot

FREE | All Ages

Dress up and bring the family out for some Trunk-Or-Treating Halloween fun. Enjoy bounce houses, face painting, NERF® blasters & targets, crafting, a fire truck display, food & drink for purchase and more!

Trunk Participants Needed!

Scan the QR code to register to decorate your vehicle while handing out provided candy to the community. The best decorated trunks have a chance to win a thrilling CASH PRIZE!

Sign-up by | Friday, Oct. 17

1st Place | \$500

2nd Place | \$300

3rd Place | \$100

Only 30 slots available!



CONTENTS



Get the Leisure Times for FREE right to your mailbox! Scan the QR code to sign up.



Find Banzai & WIN!

Email his location to misawa.marketing@us.af.mil for a chance to win a \$50 FSS gift card. Banzai was on page 40 in the September Leisure Times.

OCTOBER 2025

35fss.com [@MisawaFSS](https://www.instagram.com/MisawaFSS) [@MisawaForceSupportSquadron](https://www.facebook.com/MisawaForceSupportSquadron)

Page 5



Camp Wild Weasel

Page 7



Zombie Glow Run 5K

Page 9



Celebrity Bartender Night

Page 11



AFE Brings the Laughs

Command

Commander, 35th Fighter Wing
Col Paul T. Davidson

Commander, 35th Mission Support Group
Col J. Paul Conner

Commander, 35th Force Support Squadron
Maj Jessica B. Richmond

Deputy, 35th Force Support Squadron
Mr. Stefan Kelly

Marketing & Publicity

Marketing Director/Managing Editor
Kim Tato

Marketing & Sponsorship Assistant
Ayub Spencer

Commercial Artist
Wakouko Sato
Illustrators
Kazunori Takahashi
Mami Takabatake
Communications Specialists
Leanna Duff
Samantha Nelson

Find Banzai Winner

August 2025
Ziyun Tian

WANT TO PURCHASE AD SPACE IN THE LEISURE TIMES?

Contact us at misawa.marketing@us.af.mil. The Leisure Times is designed to entertain and inform the Misawa Air Base community about 35th Force Support Squadron facilities. Opinions expressed in the Leisure Times do not necessarily represent those of the U.S. Air Force. All submissions are subject to editing prior to printing.

Resources

- 13 Auto Hobby
- 14 Military & Family Readiness Center Programs
- 22 Education & Training • MiTA • SkillBridge • Military Testing
- 23 NAF HRO
- 27 Overstreet Memorial Library
- 30 Pet Kennel
- 33 Banzai Award
- 34 Weasel Express Shuttle Service
- 35 FSS Directory
- 36 FSS Event Calendar

Entertainment

- 2 Trunk-or-Treat
- 5 Survive Misawa
- 6 Himberg Pool • Pool Party • Area 35 • Lightspeed Paintball • Super Saturday • Defend Area 35 • The Lodge
- 8 Club Member Social • Trivia Night
- 9 Celebrity Bartender Night
- 10 Taiko Drumming Class • Friday Night Bingo
- 11 AFE Brings the Laughs
- 13 Cars & Coffee
- 24 Pins & Prizes • HyperBowling Blast • Intramurals Bowling League • Dress-A-Pin
- 25 Score Wars • Red Pin Tuesday • Hyper Thursday • Laser Storm Bowling • Airmen's Alley
- 30 Howl-O-Ween

Culture & Travel

- 4 ODR Tours
- 12 ITT Tours

Fitness & Sport

- 7 Zombie Glow Run 5k
- 26 Orientation to Golf • 1-2-3 Challenge
- 28 Youth Sports • Volunteer Coaches • Instructors Wanted

Dining

- 9 Aomori Eats • Sunday Breakfast Buffet • Taco Tuesday • Wing Wednesday • Tanuki's • Touch & Go • Wild Weasels' Bar & Grill • Faultline
- 19 Grissom DFAC • Weekly Specials • Sub Station • 4th Quarter Birthday Meal
- 20 October Dining Specials
- 25 Kids Eat FREE Night

Learn & Create

- 17 Brushes & Beverages • Cocktails & Ceramics
- 18 Wood Shop
- 27 Family Tree History Class

Youth & Family

- 5 Camp Wild Weasel • Together Under the Same Sky
- 6 Family Fun Night • Pool Party • Defend Area 35 • Super Saturday
- 8 Family Member Social
- 17 Young Van Gogh • Mini Monet
- 27 Halloween Coloring • Halloween Story & Craft Time • Fire Prevention Week Story Time • Family Tree History Class • Weekly Story Time • STEM Programs • Pokémon™ TCG Club • Toddler Play Group
- 29 Pumpkin Decorating with Parents • Fall Harvest Festival & Parade • Spooktacular
- 31 DODEA Sollars & Edgren Events



35th
FSS
Misawa Air Base, Japan

Hakkoda Day Hike

Saturday, Nov. 1

Departs | 7 a.m.

Returns | 6 p.m.

\$65 per person

Ages 18+

We're headed to the Hakkoda Mountains! We'll hike to the Sennetai Mountain Hut and the summit of Hakkoda's Mt. Odake. We'll also hike over semi-improved trails and rock for a distance of 10 km, so come prepared to hop, skip and walk with a pack.

- Hiking boots, long pants and other appropriate clothing are required. Cotton clothes, jeans and sneakers are **NOT** permitted

Orchard & Onsen

Saturday, Nov. 8 | Tuesday, Nov. 11

Departs | 8 a.m.

Returns | 5:30 p.m.

\$75 per person

Ages 18+

Breathe in the fresh air on this Veterans Day weekend as you pick crisp apples straight from the orchard, with a few of them to claim as yours to take home. Then, journey deep into a remote valley untouched by electricity where time seems to slow. The highlight—Aoni Onsen—a secluded hot spring inn lit only by soft lamplight. Soak in the peaceful waters surrounded by silence, nature and traditional charm.

Includes: Transportation, Adventure Guide & admission fees

Michinoku Coastal Trail

Beach & Peak Hike

Saturday, Nov. 15

Departs | 8 a.m.

Returns | 4 p.m.

\$95 per person | \$75 M1*

Ages 18+

Stunning coastline is less than an hour away. Refresh, recharge, invigorate. This is the northernmost section of the famous Michinoku Coastal Trail which runs 700 km south to Sendai. For seasoned hikers, this is a great introduction to the riches of the east coast, starting with two sections that total 20 km.

Includes: Transportation & Adventure Guide

November Adventures go on sale Tuesday, Sept. 30

*Misawa First (M1) discount prices are for active duty military and their family members assigned to Misawa Air Base. Verification in the form of a military/family member ID must be provided at time of enrollment.

**Those under 18 years of age must have a parent or guardian participating.

The Fall & Winter Adventure Guide is now available!

Lake Towada Fall Kayak

Saturday, Nov. 1

Departs | 9 a.m.

Returns | 4 p.m.

\$50 per person

Ages 16+**

Enjoy the crisp fall weather while paddling across Lake Towada! We'll take in the wondrous views of the clear water and the mountains that will surround us.

Includes: Transportation, Adventure Guide/ACA Kayak Instructor, sit-on-top kayak, semi-dry suit & personal flotation device

Tsugaru Peninsula

Saturday, Nov. 15–Sunday, Nov. 16

Departs | 7 a.m.

Returns | 5 p.m.

\$250 per person | \$180 M1*

Ages 18+

Join us for the ultimate overnight escape! We'll summit the iconic Mt. Iwaki—part hike, part scenic cable car ride, all breathtaking views. Then we'll wind down the Japanese way with a relaxing soak in a seaside onsen, where soothing hot spring waters meet stunning ocean panoramas.

Includes: Transportation, Adventure Guide, lodging & admission fees

Team Misawa

Mt. Eboshi Summit Hike

Sunday, Nov. 2

Departs | 8 a.m.

Returns | 3 p.m.

\$45 per person

Ages 14+**

Join us and our friends at the Misawa Navy Liberty Program for a summit hike straddling the peninsula between Mutsu Bay and the Pacific. Views at the top alone are worth the trip. The trail is easy enough for beginner hikers, but also offers enough variety in terrain/vegetation to satisfy more experienced hikers.

Includes: Transportation, Adventure Guide & backpack

OUTDOOR RECREATION CENTRE



Three Capitals

Wednesday, Nov. 26–Monday, Dec. 1

Departs | 5 p.m.

Returns | 10 p.m.

\$785 per person | \$675 M1*

Ages 18+

Sail through Japan's rich history and vibrant culture with a 22-hour cruise aboard the country's largest ferry—featuring a hot spring, theater and dining. Then, explore three former capitals. In Osaka, take in the sights and flavors of Dotonbori and visit Tsutenkaku Tower. Kyoto offers iconic stops like Bamboo Street, Kiyomizu Temple and the atmospheric Ninen & Sannenzaka lanes. Finally, in Nara, meet the friendly deer of Nara Park and visit the impressive Todaiji Temple and Kasuga Shrine.

Includes: Transportation, Adventure Guide, lodging & select admission fees



Special Events



Together Under the Same Sky

Saturday, Oct. 4

3–8 p.m.

The Lodge BLDG. 1482

FREE | All Ages**

Join us for a global celebration of International Observe the Moon Night, hosted by Morale, Welfare and Recreation (MWR) programs across all branches of the armed forces. In partnership with NASA, MWR facilities worldwide will offer fun and educational moon and space-themed activities for military-affiliated families. And if the skies are clear, we'll cap the night with some unforgettable moon gazing. Don't miss this stellar evening of science, community and cosmic wonder!

Don't miss exclusive pre-recorded greetings from our guest speakers, astronaut Megan McArthur and Lindsay Kaldon!

The first 100 youth participants will receive a FREE activity book!

SIGN-UP



Camp Wild Weasel

Saturday, Oct. 18–Sunday, Oct. 19

Check-in Noon

Check-out 10 a.m.

Camp Falcon

FREE | All Ages**

The weather might be getting cooler, but that doesn't mean camping season is over! From yard games, bounce houses, crafts, s'mores and more, we'll turn what would be an ordinary weekend into a fun-filled camping retreat!

- Tent, sleeping bag & pad are not included, but are available for rent at ODR
- Pets are **NOT** permitted at this event

SIGN-UP



Survive Misawa

Saturday, Nov. 8–Sunday, Nov. 9

Begins | 7 a.m.

Ends | 4:30 p.m.

The Lodge BLDG. 1482

Sign-up by | Friday, Oct. 31

\$50 per person

Ages 18+

Think watching Survivor™ is fun? Try starring in it—well, sort of. Join us for our hilarious take on the legendary reality show, complete with wild challenges, epic “alliances” and a whole lot of laughter (and maybe betrayal). We're looking for **32 bold participants** ready to outwit, outplay and out-laugh the rest. No million-dollar prize here—just bragging rights, memories and a few other surprises that last way longer than a season finale.

Includes: Lodging***, select meals & bragging rights
• Registration crew may not be your competition team
***Lodging details revealed upon participation.



RECREATION CENTER

BLDG. 486 | 226-9378

@MisawaOutdoorRecreationCenter

@MisawaODR



HIMBERG POOL

BLDG. 625 | 226-7665

HOURS OF OPERATION

Monday, Wednesday & Friday | 6 a.m.–7 p.m.

Tuesday & Thursday | 8 a.m.–7 p.m.

Saturday | 8 a.m.–Noon & 1–4 p.m.

FW Down Days | 10 a.m.–5 p.m.

CLOSED | Last Wednesday of the month, Sundays,

US & select JP federal holidays

Call 226-7665 or visit Himberg Pool for PT reservations.

Family Fun Night

Every Friday* | 5–7 p.m.

FREE | All Ages

Enjoy an evening of fun with the whole family at the Himberg Pool. Bring your favorite water toys, Super Soakers™, Nerfballs® and US Coast Guard approved inflatables to the pool for a great time! All regular Himberg Pool rules and age requirements apply.

*No Family Fun Night on FW Down Days

Pool Party

Friday, Oct. 24 | 5–7 p.m.

FREE | All Ages

Eat, drink, play and laugh when Family Fun Night takes it to the next level with our monthly Pool Party. We will provide a limited amount of food and beverages, and give you the chance to take out all of our toys! All regular Himberg Pool rules and age requirements apply.

AREA 35



Super Saturday

Saturday, Oct. 4 | 10 a.m.–5 p.m.

Ages 16+ to play**

Ages 10+ to play with a parent or guardian (ages 18+) actively participating

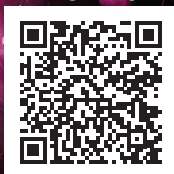
2,000 paintballs*** | \$65

Enjoy playing paintball, shooting archery and using our axe throwing lanes! No advance registration is required.

**Axe throwing is for ages 16+ only. An adult, age 18+ must sign liability waivers and must be on site at all times.

***Paintballs are an additional fee. Area 35 is a cash only (USD) facility. Credit card payments are accepted at ODR, BLDG. 486, during business hours.

Sign-up



Defend Area 35

Saturday, Oct. 25

3–4 p.m. | Ages 10+ to play with a parent or guardian (ages 18+) actively participating

5–7 p.m. | Ages 18+

FREE

2,000 paintballs*** | \$65

Things are getting spooky at Area 35! Grab your family and friends as Area 35 turns into a battleground between an alliance of aliens and zombies who are trying to overthrow Area 35 and those trying to defend it. Enjoy FREE field entries, attack pack rentals and food!

***Paintballs are an additional fee. Area 35 is a cash only (USD) facility. Credit card payments are accepted at ODR, BLDG. 486, during business hours.

THE LODGE

BLDG. 1482 | 226-9378

Get exclusive use of the facility for the day. Book your next birthday party, going away, baby shower or another event at The Lodge. Reservations are available year-round, visit the Outdoor Recreation Center to make one today.

\$50

Noon–10 a.m. next day

Max. occupancy 70

LODGING AMENITIES:

- Booths & Couches
- Restrooms
- Refrigerator
- Sink
- Microwave
- TV
- DVD Player
- Foesball Table



Lightspeed Paintball

Friday, Oct. 17 | 6–9 p.m.

Ages 16+ to play

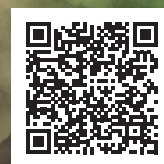
Ages 10+ to play with a parent or guardian (ages 18+) actively participating

2,000 paintballs*** | \$65

Play paintball under the lights of our speedball court. Enjoy FREE field entries, Attack Pack rentals and food! No advance registration is required.

***Paintballs are an additional fee. Area 35 is a cash only (USD) facility. Credit card payments are accepted at ODR, BLDG. 486, during business hours.

FREE Shuttle



Need a ride to Area 35?

ODR has you covered.

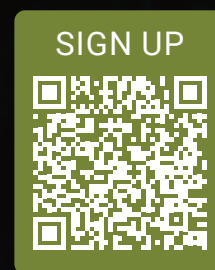
Reserve your spot on the FREE shuttle

POTTER FITNESS CENTER

Potter Fitness Center | BLDG. 622 | 226-1964
Freedom Fitness Center | BLDG. 1962 | 226-9987
Iron Hand Fitness | BLDG. 1006, Bay 3
24/7 Access Card Only
f @MisawaFitnessAndSports



ZOMBIE GLOW RUN 5K



Friday, Oct. 24

Starts | 6 p.m.

BLDG. 197 Trail

DoD ID Holders & JASDF 自衛隊 | FREE

Ready to run for your life? Join us for a heart-pounding, thrill packed Zombie Run 5K where fitness meets fright! Dash, dodge and weave your way through the course, while trying to escape the clutches of zombies lurking along the route. Costumes aren't required, but they definitely make it more fun!

Become a Club Member and receive all of the wonderful benefits that come along with it! Meal vouchers, FREE room rentals, 10% off dining facilities and so much more. Visit Memberplanet.com to sign up today!



FIRST FRIDAY NIGHT CLUB MEMBER SOCIAL

Friday, Oct. 3

4:30-7 p.m.

18+

Faultline

Club Members are invited to come and unwind after a fulfilling week of work. Enjoy a grazing buffet, drink specials and an exciting raffle prize.

TUESDAY NIGHT FAMILY MEMBER SOCIAL

Tuesday, Oct. 14

4:30-7 p.m.

All Ages

Misawa Club

Get more out of your club membership. Member families can enjoy a FREE night of food, drinks and movie entertainment! Scan the QR code above to become a member.

RECURRING EVENTS

TRIVIA NIGHT

Thursday, Oct. 16

18+

Doors Open | 5 p.m.

Game Starts | 6:30 p.m.

Faultline

Members | \$5

Non-Members | \$10

CLOSURES/SPECIALS HOURS

Maintenance Day

Friday, Oct. 10

Monday, Oct. 6

Wild Weasels' & Tanuki's

All Operations | CLOSED

CLOSED

In support of the Navy Ball

Columbus Day

Monday, Oct. 13

All Operations | CLOSED



Where good vibes and good times are always on the menu!



SAFE COMEDY SHOW

Saturday, Oct. 25

Doors Open | 6 p.m.

Starts | 7 p.m.

See page 11 for more details.



18+

CELEBRITY BARTENDER NIGHT

HOST | NAVY THEME | '80s NIGHT

Friday, Oct. 3

7-9 p.m.

Faultline

Come out for a fun night where the drinks are flowing and leadership's doing the pouring! Order your favorites or ask our special guest bartenders about theirs.

CLUB

BLDG. 485 | 226-9122

DINING

SUNDAY BREAKFAST BUFFET

Every Sunday

9 a.m.-1:30 p.m.

Club Members | \$15

Non-Members | \$18

Ages 5-11 | \$9

Ages 4 & under | FREE

Join us for our traditional Sunday breakfast with an awesome waffle station and all-American favorites, plus delicious lunch options featuring a variety of specialty dishes each week.



TOUCH & GO

Monday-Friday

6 a.m.-6 p.m.

Saturday | 8 a.m.-2 p.m.

AOMORI EATS

Live Action Stations

Monday-Thursday

10:30 a.m.-1:30 p.m.

Lunch | Monday-Friday

10:30 a.m.-1:30 p.m.

Dinner | Monday-Wednesday

4:30-8 p.m.

Sakura Room

Dine in or order to-go.

Place an order over the phone at 226-5062 or 0176-77-5062, or order to-go at the door.

TACO TUESDAY

Tuesday | 4:30-8 p.m.

\$1.25 each

Olé, it's Taco Tuesday! Choose from beef, chicken or pork, loaded on soft tortillas or crunchy taco shells, with fresh toppings just the way you like it.

WING WEDNESDAY

Wednesday | 4:30-8 p.m.

\$.75 per wing

Wing Basket | \$6 for 6 wings & fries

WILD WEASELS' BAR & GRILL

Thursday-Saturday | 4:30-9 p.m.

TANUKI'S

Wednesday-Saturday | 4:30-10 p.m.

FAULTLINE

Friday-Saturday

9 p.m.-Midnight

Collaboration with Misawa Arts & Crafts Center
See page 17 for more details.

COCKTAILS & CERAMICS

Wednesday, Oct. 15

5:30-8:30 p.m. | Faultline

18+

BRUSHES & BEVERAGES

Thursday, Oct. 23

5:30-8:30 p.m. | Faultline

18+



Keep in touch on social media to find out what member exclusive events we will be holding!

TRUNK -OR-TREAT

Friday, Oct. 24
EFMP Only | 4:30–5 p.m.
Open to All | 5–7 p.m.
BX Parking Lot
FREE | All Ages

See page 2 for more details.

SPONSORED BY



TAIKO DRUMMING CLASS

Wednesdays

5–6 p.m. | Beginners, Ages 10+

6–7 p.m. | Intermediate

7–8 p.m. | Advanced

Mokuteki Ballroom

\$15 per person

Sign up by 4 p.m. on Mondays

Taiko drumming is a traditional Japanese art form that combines powerful rhythms, dynamic movement and intense energy. What better way to truly embrace the rich culture while living in Japan!

FRIDAY NIGHT BINGO

Friday, Oct. 17

Starts 7:30 p.m.

Community Commons

BLDG. 1006, Bay 1

Pre-Sale \$15

Day of Event \$20

Ages 18+

Grab your friends and enjoy some Friday night fun with bingo! Bring your own snacks to enjoy while you play to win CASH PRIZES!

• Purchase bingo books at the Community Commons



COMMUNITY COMMONS

BLDG. 1006, Bay 1 | 226-4128

@MisawaCommunityCommons



*Operation Stand Up
for Service*

Greg Morton



ARMED FORCES ENTERTAINMENT

BRINGS



LAUGHS



**SATURDAY, OCT. 25
DOORS OPEN | 6 P.M.
STARTS | 7 P.M.**

MISAWA CLUB | BLDG. 485

Tickets are limited, so pick yours up
at the Community Commons, BLDG.
1006, Bay 1 or the Misawa Club
Cashiers' Cage, BLDG. 485

NOW-Friday, Oct. 24

Get ready for a night
of nonstop laughs with
hilarious stand-up pros Justin Rivera,
Patrick DeGuire and Greg Morton!
These comedy heavyweights are
bringing their best punchlines,
outrageous stories and side-splitting
energy to the stage for one
unforgettable show. Don't miss your
chance to catch these comedy pros live,
it's going to be a night to remember!

Justin Rivera



Patrick DeGuire



FREE | ALL AGES

No official endorsement intended



**Learn more at
ArmedForcesEntertainment.com**



MISAWA ITT

NOVEMBER

BLDG. 485 | 226-3555 | [f](#) @MisawaITT

HIROSAKI CHRYSANTHEMUM FESTIVAL & APPLE PICKING

Saturday, Nov. 1 | On sale Wednesday, Oct. 1

Saturday, Nov. 8 | On sale Wednesday, Oct. 8

Departs | 11:30 a.m.

Returns | 9 p.m.

Ages 12+ | \$50

Ages 4–11 | \$45

Ages 3 & under | \$20

Visit beautiful Hirosaki Park to witness chrysanthemums in bloom. See Kiku-ningyo, or hrysanthemum doll displays, pick out your favorite and then pick some delicious apples. It is amazing to see all of the late fall colors in Hirosaki.

APPLE PICKING & MOUNT NAKANO MOMIJI

Saturday, Nov. 1 | On sale Wednesday, Oct. 1

Departs | 7:30 a.m.

Returns | 5:30 p.m.

Ages 12+ | \$50

Ages 4–11 | \$45

Ages 3 & under | \$20

Enjoy apple picking at the Aomori Apple Orchard, located in the Tsugaru area at the foot of Mount Iwaki, Japan's largest apple-producing region. We'll also visit Mount Nakano-Momiji, known for its breathtaking autumn foliage and scenic hiking trails.

TOHOKU FREE BLADES ICE HOCKEY

Saturday, Nov. 8 | On sale Wednesday, Oct. 8

Departs | Noon

Returns | 5 p.m.

Ages 16+ | \$25

Ages 3–15 | \$20

Ages 2 & under | \$10

Experience the fast-paced excitement of a Free Blades ice hockey game as you cheer on one of Japan's top teams in the action packed competition for the Asia League Ice Hockey Japan Cup 2025-2026!

Includes: Round-trip transportation & seat reservation

RYUSENDO CAVES

Saturday, Nov. 15 | On sale Wednesday, Oct. 15

Departs | 7:30 a.m.

Returns | 6 p.m.

Ages 15+ | \$70

Ages 6–14 | \$60

Ages 5 & under | \$20

Visit one of the three largest stalactite caves in Japan and explore beautiful caverns up to 120 meters deep, where stalactites and stalagmites are abundant. We'll also visit the Kuji Amber Museum to make your own amber accessory out of UV cured resin.

HIRAIZUMI

Saturday, Nov. 15 | On sale Wednesday, Oct. 15

Departs | 7 a.m.

Returns | 8 p.m.

Ages 12+ | \$70

Ages 6–11 | \$50

Ages 5 & under | \$30

Enjoy a cruise down the Geibikei Gorge, a trip to Konjiki-do (the Golden Hall) and visit the Chuson-ji Temple, a national treasure.

Hours of Operation

Monday–Friday | 9 a.m.–4 p.m.

CLOSED | Saturdays, Sundays & federal holidays

For more information, call 226-3555

Charter Bus

All organizations interested in chartering a bus for a tour should stop by ITT to make reservations.

Reservations are accepted up to 90 days in advance of the trip date and are taken on a first come, first served basis.

Happy Birthday from Misawa ITT!

Save up to \$10 on any local tour scheduled during your birth month, limit one per individual.

MATSUSHIMA

Saturday, Nov. 22 | On sale Wednesday, Oct. 22

Departs | 6:30 a.m.

Returns | 9 p.m.

Ages 12+ | \$75

Ages 6–11 | \$55

Ages 5 & under | \$30

Enjoy the beauty of one of the three most scenic spots in Japan. Relax on a ferry boat cruise in Matsushima Bay with over 260 pine-clad islands. We'll also visit Zuiganji Temple and Godaido Shrine.

SENDAI AQUARIUM

Saturday, Nov. 22 | On sale Wednesday, Oct. 22

Departs | 7 a.m.

Returns | 10:30 p.m.

Ages 12+ | \$70

Ages 6–11 | \$50

Ages 5 & under | \$30

We'll explore the Sendai Umino-Mori Aquarium, showcasing over 300 species of local marine life, including a rare blue shark, the only one on exhibit in Japan. We'll also visit Mitsui Outlet for shopping.

HELLO KITTY SANRIO PUROLAND | OVERNIGHTER

Saturday, Nov. 8–Tuesday, Nov. 11 | On sale now

Departs | 7 a.m.

Returns | 6 p.m.

Ages 2 & under | \$100 flat fee

Ages 3–17 | Receive \$10 off below room rates

Single Room

1 Person | \$450

2 People in Room | \$330 per person

Double Room

1 Person | \$550 per person

2 People in Room | \$370 per person

3 People in Room | \$320 per person

4 People or More | \$290 per person

King Suite

1 Person | \$670 per person

2 People in Room | \$470 per person

3 People in Room | \$370 per person

4 People or More | \$320 per person

Includes: Round-trip transportation by bus, three nights of accommodations at The New Sanno, one day of admission to Hello Kitty Sanrio Puroland, an English speaking tour escort and one free day to explore Tokyo on your own


CARS & COFFEE

Sunday, Oct. 12
10 a.m.–2 p.m.
Auto Hobby Center
Open to All | FREE

Come check out 25 amazing hand-picked show cars while you connect with fellow car enthusiasts and discover all that the Auto Hobby Center has to offer!



AUTO HOBBY

BLDG. 767 | 226-4654

 @MisawaAutoHobbyCenter



M&FRC

BLDG. 656 | 226-4735  @MisawaM&FRC  @Misawa_MFRC

CLOSURES

CLOSED | Every Thursday | 2-4 p.m.

CLOSED | Every first and third Thursday of the month, weekends & federal holidays

SPONSORSHIP TRAINING

Tuesday, Oct. 7 | 1 p.m.

Get the training, tools and resources you need to support incoming service members and their families. This course is open to all Misawa Air Base members, covering the essentials of effective sponsorship and preparing you to guide newcomers through the challenges of relocating overseas and settling in at Misawa Air Base, Japan.

NEWCOMER'S ORIENTATION: RIGHT START

Right Start is a mandatory orientation held at the Misawa Club, BLDG. 485, for all inbound military personnel and DoD Civilians. Please contact your unit's CSS to sign up.

Loan Locker: First-come, first-serve basis of borrowed dish packs and other essential items as you wait for your Household Goods or after you Pack-Out for departure.

DEPLOYMENT PROGRAM

The M&FRC offers support services to military members, civilians and their families throughout every phase of the deployment and remote tour cycle. All workshops require advance registration through Tockify.

Pre-Deployment Workshop* | Wednesday, Oct. 1 & 15 | 9-10 a.m.

Required for military and civilian personnel with deployment taskings of **30+ days or 179+ day TDY/remote tours**. Topics include emotional cycles of deployment, practical planning tips, staying connected and reintegration strategies. Spouses are strongly encouraged to attend.

Reintegration Workshop* | Friday, Oct. 3, 17, 24 & 31 | 9-11 a.m.

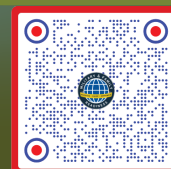
Required within **7 days of return**, this workshop helps returning members ease back into home and work life after a deployment or remote assignment. It focuses on rebuilding family routines, effective communication and accessing ongoing support. Spouses are strongly encouraged to attend.

Remote Tour Briefing* | Monday, Oct. 6 & 20 | 9-10 a.m.

Required for those assigned to **12-month unaccompanied remote tours**, this briefing outlines the full scope of support available.

All programs and events are FREE, but registration is required for each class. Unless otherwise stated, all events take place at the M&FRC. Scan the QR code to sign up. Class dates and times are subject to change.

*By appointment only through Tockify



TOCKIFY SIGN-UP

TRANSITION ASSISTANCE PROGRAM (TAP)

Congressionally mandated program for all those separating or retiring that provides information, tools and resources for a successful transition out of the service.

Pre-Separation Briefing

Tuesday, Oct. 7 | 8:30–11:30 a.m.

Transition Workshop (3-Day)

Monday, Oct. 20–Wednesday, Oct. 22
8:30 a.m.–4:30 p.m.

Employment (2-Day)

Thursday, Oct. 23–Friday, Oct. 24
8:30 a.m.–4:30 p.m.

Veterans Affairs Individual Appointments*

VA Representatives

Mr. Deadwiley, David

David.Deadwiley.CTR@vatap.calibresys.com

Mr. Billingsley, Justin

J.Billingsley.ctr@vatap.calibresys.com

DSN: 243-3960 or 243-3962

COMM: 0468-16-3960 or 0468-16-3962

PERSONAL & WORK LIFE

This program offers classes that focus on building and maintaining personal resiliency and healthy relationships.

Bundles for Babies

Thursday, Oct. 16 | 9 a.m.–12:30 p.m.

MILITARY & FAMILY LIFE COUNSELOR (MFLC)

MFLCs offer short-term counseling services focused on situational concerns and issues fused with problem-solving strategies for service members and their families.

Building Healthy Work Environments

Tuesday, Oct. 14 | 10–11 a.m.

Building Emotional Resilience

Tuesday, Oct. 28 | 10–11 a.m.

INTER-CULTURAL PROGRAM

Provides resourceful information, education and skills for members to get acclimated to Misawa Air Base and the local community.

First Step Japanese Lesson

Monday, Oct. 6, 20 & 27

11:30 a.m.–12:30 p.m.

Konnichiwa Japanese

Tuesday, Oct. 7 & 21 | 2:15–3 p.m.

(Japanese Class for Children)

Next Level Japanese

Wednesday, Oct. 8 & 22 | 6:30–7:30 p.m.

Grocery Shopping Tour

Thursday, Oct. 9 | 9:30–11:30 a.m.

Meet at Ms. Veedol Dorm by Veedol Plaza

Join us for a fun and practical shopping trip to the 9th Market and Universe.

Additional details will be provided upon sign-up.

Language Exchange Night

Tuesday, Oct. 28 | 6–7 p.m.

Mokuteki Ballroom, BLDG. 626

ADDITIONAL PROGRAMS

For voting assistance, Air Force Aid Society, Commander Key Support Program, Exceptional Family Member Program and Personal Financial Readiness, contact us for more details.

Class sign-ups begin
Wednesday, Oct. 1

*Advance registration is required for all classes, as spots are limited. Failure to reach minimum class participation may result in a rescheduled date or cancellation. Please sign up at Arts & Crafts, BLDG. 645.



Skills & Trades Center
BLDG. 645 | 226-4279

 @MisawaArtsAndCraftsCenter

MISAWA
ARTS &
CENTER

ADULT CLASSES

COCKTAILS & CERAMICS

Wednesday, Oct. 15 | 6–8:30 p.m.

BLDG. 485 | Faultline

\$15 | Ages 18+

Ages 20+ may consume alcohol

Join us for a fun-filled ceramic painting night at the Misawa Club! Order your favorite drinks, relax and unleash your creativity as you paint your choice of four ceramics available when signing up. Don't miss out on this relaxing and creative evening—grab your friends and paint the night away!

- Fired ceramics will be ready for pick-up about 10–14 days after the class
 - No outside food or drinks allowed
 - Advance registration is required at Arts & Crafts, BLDG. 645.
- Sign up by 5 p.m. on Wednesday, Oct. 15*

BRUSHES & BEVERAGES

Thursday, Oct. 23 | 5:30–8:30 p.m.

Social Time | 5:30–6 p.m.

Painting Begins | 6 p.m.

BLDG. 485 | Faultline

\$25 | Ages 18+

Ages 20+ may consume alcohol

In collaboration with the Misawa Club, Brushes & Beverages will take place at the Faultline! Place your drink orders, enjoy your special beverage, grab a brush and learn new painting techniques for a night of fun! Basic painting skills are required, but this class is open to all levels.

- No outside food or drinks allowed
 - Advance registration is required at Arts & Crafts, BLDG. 645.
- Sign up by 4:30 p.m. on Thursday, Oct. 23*

MISAWA & CRAFTS CENTER

KID CLASSES

MINI MONET

Saturday, Oct. 11 | Noon–1:30 p.m.

BLDG. 645 | Arts & Crafts

\$18 | Ages 5–9

A fully instructed class that is dedicated to teaching new skills and techniques to create a beautiful masterpiece. Parental supervision is required.

Sign up by 11 a.m. on Saturday, Oct. 11*



YOUNG VAN GOGH

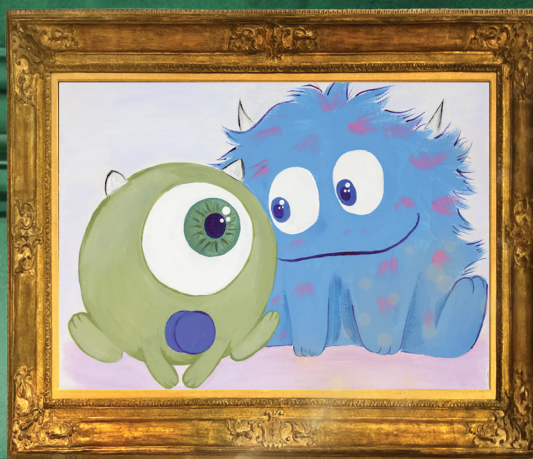
Saturday, Oct. 18 | Noon–1:30 p.m.

BLDG. 645 | Arts & Crafts

\$20 | Ages 10+

A fully instructed class that teaches advanced skills and techniques. This class requires basic painting skills, but is open to all levels.

Sign up by 11 a.m. on Saturday, Oct. 18*



WOOD SHOP

MISAWA ARTS & CRAFTS CENTER
Skills & Trades Center | BLDG. 645 | 226-4279

Tuesday–Friday | Noon–2:30 p.m. & 3:30–8 p.m.
Saturday | 10 a.m.–Noon & 1–6 p.m.
CLOSED | Sundays, Mondays, US & select JP federal holidays



AVAILABLE WOOD TYPES

- Birch
- Cherry
- Mahogany
- Oak
- Poplar
- Walnut

DIY

Create and build your very own masterpiece at the Wood Shop. Ask about our Wood Shop Safety Class to get certified for use of our shop on your own during Wood Shop operational hours. The Arts and Crafts Center has a large variety of wood to choose from to get you started, or you're welcome to use your own. Once your project is built, you can give it a smooth and shiny finish by using the paint booth.

Fees*

Wood Shop Use | \$3 per hour
15-Hour Punch Card | \$30
Unlimited Monthly Use | \$35 per month
Wood | Price will vary dependent on material

CUSTOM ORDERS

Looking for a professional touch? Our Master Craftsman with over 20 years of experience takes pride in every project he creates. From going away gifts to annual awards, we can make your visions come to life. Visit the Wood Shop at the Arts and Crafts Center to place your order for your next creation today!

Fees*

Labor | \$15.75 per hour
Material | Price will vary dependent on project

*All purchases can be made at the central cashier in the Arts & Crafts retail store. Purchases cannot be made after 6 p.m. due to retail store closure.



GRISSOM DINING FACILITY

BLDG. 624 | 226-3997

 @MisawaGrissomDFAC

Sub Station

Available Daily

WRAPS & BREAD

*Price varies by meat selection

Deli Wrap \$1.85
Garden Wrap \$1.25
Tuna Wrap \$1.40
Hoagie*

DELI MEATS & CHEESES

Limit 2 meats & 1 cheese per customer

**Bacon can be added for an additional charge

Ham \$3.75
Tuna \$1.50
Turkey \$3.25
Roast Beef \$4.50
Bacon \$1.10**

American, swiss or provolone



THE WIZARDING BIRTHDAY FEAST*

4th Quarter Birthday Meal

Friday, Oct. 17 | 5-7 p.m.

Featured Items

Pork Schnitzel
Sheppard's Pie
Chicken Gumbo
DFAC Butterbeer



JOIN US FOR GAMES,
RAFFLES & A HARRY POTTER
MOVIE MARATHON!

Weekly Specials

Monday | Pasta Bar
Tuesday | Taco Tuesday
Wednesday | Wing Wednesday
Thursday | Southern Meal
Friday | Taste of Asia

*ELIGIBILITY: All Active Duty and ESM meal card holders with birthdates from Wednesday, Oct. 1-Wednesday, Dec. 31. Eligible members may bring one guest.

CASH PAYING CUSTOMERS: A surcharge of 33% will be applied to the total price. Menu is subject to change.

OCTOBER DINING SPECIALS



ESM CARD USERS

E Items are ESM approved **E** Items are not ESM approved

1. Go to any of the listed dining locations
2. Choose any ESM approved menu item
3. Swipe your meal card

FIT PIT

Inside Potter Fitness Center | BLDG. 622

CLOSURES

Thursday, Oct. 2 | Maintenance Day | Early **CLOSURE** at 5 p.m.
Monday, Oct. 13 | Columbus Day | **CLOSED**

PB Bluenana

\$6.50 **E**

Enjoy our PB Bluenana smoothie, a blend of peanut butter, banana, blueberries, oats & yogurt, providing a tasty & nutritious treat.



FLYERS

BLDG. 626 | 226-8255
Then dial | 1-281-657-1555

CLOSURES

Monday, Oct. 20 | Maintenance Day
CLOSED 5:30 a.m.–5:30 a.m. the next day

Witches Brew **E** Grande Only | \$5

Dark chocolate, white mocha & marshmallow latte.
Hot or Iced



Spooky **E** Family Latte Grande Only | \$5

Mocha, almond & coconut latte.
Hot or Iced

Garlic Chicken Pizza

Personal \$8
Medium \$16
Large \$19 **E**

Calzone \$11

Garlic butter base, savory chicken, broccoli & mushrooms.



LAKEVIEW GRILLE

BLDG. 1464 | 957-1564
Then Dial | 1-281-657-1564

CLOSURES

Monday, Oct. 20 | Maintenance Day | **CLOSED**

Macho Nacho

\$8.95 **E**

A mountain of tortilla chips topped with chili, steak pieces, nacho cheese, tomato, jalapeño peppers, green onion, sour cream & salsa.

Steak Plate

\$13 **E**

A 6 oz. ribeye steak that is grilled to perfection & drizzled with a Korean steak sauce. Served with rice & a side salad.



BUMPERS FUSION DINER

BLDG. 627 | 957-1553
Then Dial | 1-281-657-1553

CLOSURES

Tuesday, Oct. 7 | Maintenance Day | **CLOSED**

Monday, Oct. 13 | Columbus Day | Open Noon–6:30 p.m.

Beef Quesadilla

\$10 **E**

Seasoned beef, melted mozzarella & cheddar cheese loaded in a grilled tortilla with our bold homemade dipping sauce for the ultimate flavor kick. Comes with fries & a 16 oz drink.



MILTA BRIEFINGS

Thursday, Oct. 2, 16 & 30 | 1 p.m.

Thursday, Oct. 9 & 23 | 9 a.m.

Education Center Classroom | BLDG. 653, RM. 204

Military Tuition Assistance Briefings are required for Airmen who are using MilTA for the first time and for Airmen who have been inactive in using their TA benefits for over one year.

Air Force Personnel: Register for the briefing via Air Force Virtual Education Center (AFVEC) Events Calendar.

HOURS OF OPERATION

Monday, Tuesday & Thursday | 8 a.m.–Noon & 1–4 p.m.

Wednesday | 9 a.m.–Noon & 1–4 p.m.

Friday | 8 a.m.–Noon

CLOSED | Weekends & federal holidays

MILITARY TESTING

Thursday, Oct. 9 | 8 a.m. & 1 p.m. | DLPT /

AFCT / ASVAB

(Civilian Only - Cyber Test, TAPAS, Mental Counters, Coding Speed)

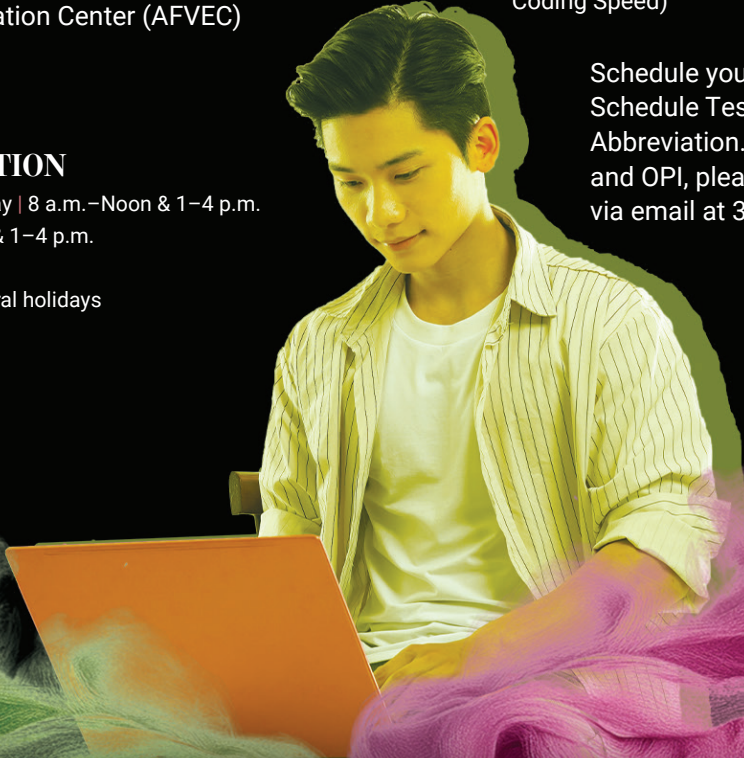
Thursday, Oct. 23 | 8 a.m. | AFOQT / WAPS

Monday, Oct. 27 | 8 a.m. & 1 p.m. | DLPT /

AFCT / ASVAB

(Civilian Only - Cyber Test, TAPAS, Mental Counters, Coding Speed)

Schedule your next military test via AFVEC > Schedule Tests > Select Base and Test Abbreviation. To schedule a test for AFRAT, EDPT and OPI, please send an inquiry request to our TCO via email at 35mss.educationtesting@us.af.mil



EDUCATION & TRAINING OFFICE

BLDG. 653, RM. 203 | 226-4201 | MisawaEducationOffice@us.af.mil

 @MisawaABEducation&Training

SKILLBRIDGE BRIEFING

Thursday, Oct. 30 | 9 a.m.

Education Center Classroom | BLDG. 653, RM. 204

Learn about the SkillBridge program and how to apply. This briefing is open to all branches and is required for Airmen who plan to apply through the Misawa Education Office. We recommend Airmen attend the briefing at least one year prior to their DOS/DOR.

Air Force Personnel: Register for the briefing via AFVEC Events Calendar.

Navy Personnel: Contact the Education & Training Office to register.

NAF HR OFFICE

Torii Building 656, Room 1460

226-3108

Facebook icon @MisawaNAFHRO

FREE CHILDCARE!

For qualifying employees

Child & Youth Program Assistant (CYPA)

DISCOUNTED CHILDCARE BENEFITS

- All CYPA regular staff who spend at least 75% of their work hours in the classroom and flex employees who work an average of 15 hours in the classroom receive FREE childcare for their first child enrolled in the DAF Child Development Program.
- NOW offering a 37% discount for every additional child enrolled.

Job Openings

CHILD AND YOUTH PROGRAM ASSISTANT (TARGET LEVEL):

Coordinates and conducts activities for children and/or youth ranging in age from 6 weeks to 18 years. Creates an environment which welcomes participant interest and promotes positive interactions. Implements program options for children and youth with special requirements. Demonstrates, instructs, leads and facilitates planned and spontaneous program activities. Briefs staff, management, and parents on activities. Conducts inventory on equipment and supplies.

CHILD AND YOUTH PROGRAM ASSISTANT (INTERMEDIATE LEVEL):

Assists in planning, coordinating and conducting activities for program participants. Creates an environment which welcomes participant interest and promotes positive interactions. Implements daily schedules and activity plans to ensure age/stage appropriateness. Briefs staff, management, and parents on activities. Conducts inventory on equipment and supplies.

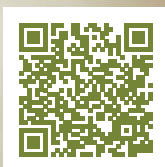
CHILD AND YOUTH PROGRAM ASSISTANT (ENTRY LEVEL):

Performs simple routine tasks following step-by-step instructions. Assists in providing planned activities using prepared curriculum and program materials. Creates an environment which welcomes participant interest and promotes positive interactions. Generates a list of needed supplies and equipment. Attends to the physical needs of the children, as applicable.

SCAN TO APPLY



Child Development Center



Cheli School Age Care

REQUIREMENTS

- Individuals must fully meet qualification/eligibility/background requirements for this position.
 - This includes providing any supporting documents needed for verification.
 - Resume
 - High School Diploma/Transcripts OR College Transcripts
 - References (at least two)
- U.S. Citizens and Non-U.S. Nationals who have resided in the U.S. or U.S. Territory for three (3) or more consecutive years immediately preceding the start of Federal affiliation.
- Applicants must be at least 18 years of age at time of hire.

Please contact the local NAF HR Office for additional information.

Special Events

INTRAMURALS

BOWLING LEAGUE

Every Wednesday | 6 p.m.

Open to All | Ages 18+

Get ready for an exciting season of strikes, spares and friendly competition! Teams will compete in a thrilling three-game series each week for the chance to WIN a cash prize. For more details and to sign up, please contact the front desk.

PINS & PRIZES

Saturday, Oct. 11 | 6–9 p.m.

Raffle Drawings | 7–9 p.m.

All Ages

Grab your friends and family and get ready for a fun-filled night of strikes, spares and PRIZES! Participants will receive a FREE raffle ticket upon entry for a chance to WIN some exciting prizes. There is a minimum of ten participants needed for the prize giveaway and winners must be present to claim their prize. This is open to all patrons, however explicit and adult-themed music and videos may be played.

DRESS-A-PIN

Decorate & Turn-in Pins | NOW–Wednesday, Oct. 22

Patron Voting | Thursday, Oct. 23–Thursday, Oct. 30

Winners Announced | Friday, Oct. 31

Top 3 place prizes for youth & adult categories:

1st Place | \$75 FSS gift card

2nd Place | \$50 FSS gift card

3rd Place | \$25 FSS gift card

The earlier you turn in your pin, the more votes you can get!

HYPERBOWLING BLAST

Sunday | 11 a.m.–7 p.m.

Monday–Thursday | 11 a.m.–9 p.m.

Friday & Saturday | 11 a.m.–11 p.m.

Come experience the future of bowling! Stop by and try out our brand-new HyperBowling™ lanes, where interactive features, moving targets and exciting challenges make every roll an adventure. Whether you're a seasoned pro or a first timer, it's a fun, high-tech twist on the classic game that you won't want to miss!

WALTON BOWLING

Closures & Holiday Hours

Tuesday, Oct. 7

Maintenance Day | CLOSED

Monday, Oct. 13

Columbus Day | Noon–7 p.m.

Recurring Events

SCORE WARS

Winners Announced | First Wednesday of the following month

1st Place | \$20 FSS gift card

2nd Place | \$10 FSS gift card

3rd Place | \$5 FSS gift card

Ready to roll your way to the top? Join Score Wars, our new monthly HyperBowling™ showdown! Rack up your best game and rank in the top three by the end of the month to WIN an FSS gift card!

• Registration required at the Front Desk prior to beginning the game



RED PIN TUESDAY

Tuesdays | 11 a.m.–9 p.m.

\$1 games & \$1 shoe rentals

If you get a strike with a red headpin, you win a FREE game! For verification, you must notify the desk that you have a red headpin prior to rolling the frame.

HYPER THURSDAY

Thursdays | 11 a.m.–9 p.m.

\$10 per hour

Turn your average Thursday into a blast with HyperBowling™ discounts! Get in on the fun, save big and roll into the weekend early with this thrilling, high-tech bowling twist!

KIDS EAT FREE NIGHT

Thursdays | 5–8:30 p.m.

Ages 12 & under

Take the night off from cooking dinner and bring the family to Bumpers Fusion Diner! Get a FREE kids meal for each purchased adult combo meal.

LASER STORM BOWLING

Fridays & Saturdays | 7–11 p.m.

We turn the lights down and the music up! Grab your friends and “glow” bowling while requesting your favorite songs. This is open to all patrons, however explicit and adult-themed music and videos may be played.

AIRMEN’S ALLEY

Fridays & Saturdays | 7–11 p.m.

Ages 18+ | E6 & below only

E1-4 | \$15

E5-6 | \$25

Enjoy unlimited games and shoe rentals all night long! You must show your ID to bowl.

SLEY CENTER

BLDG. 627

DSN: 957-1554 | Cell: 1-281-657-1554

 @MisawaWalmsleyBowlingCenter

 @Walmsley.Bowling



1-2-3 CHALLENGE

Saturday, Oct. 25

7:30 a.m. Shotgun Start

Annual Members | \$35

Non-Members | \$45

Host Nation Local Nationals | \$50

This fun fall challenge consists of 1 team score, a 2-person scramble and 3 clubs per player.

Includes: Green fee, cart fee, lunch and PRIZES

Advance sign-up is required at the Golf Pro Shop counter by 6 p.m. on Tuesday, Oct. 21.



**GOSSEY
GOLF
COURSE**

BLDG. 1464

957-1563

Then dial | 1-281-657-1564

ORIENTATION TO GOLF

Saturdays | 10-10:30 a.m.

All Ages | FREE

Ever wanted to golf, but don't know where to start? It can feel overwhelming, but our Newcomers Orientation will explain what it's all about in a fun, friendly, interactive environment! Enjoy a guided tour of the facilities, learn the basics of the game, equipment & etiquette, and meet other new golfers in a supportive setting. Experience golf in a way that's welcoming and stress-free. No pressure. No club needed. Just show up and have fun!

Like & follow us on Facebook for updates on events.



[@MisawaGosserGolfCourse&LakeviewGrille](#)



HALLOWEEN COLORING

Wednesday, Oct. 1–Friday, Oct. 31 | All Ages

Pick up Halloween-themed coloring pages at the library to color at home. Then return your colored pages to the library to receive some treats!

HALLOWEEN STORY & CRAFT TIME

Tuesday, Oct. 28
10:30–11:30 a.m.
Ages 2–5

Enjoy spooky stories and make a Halloween ornament. Wear your favorite Halloween costume to story time!



FIRE PREVENTION WEEK STORY TIME

Tuesday, Oct 7 | 10:30–11:30 a.m.
Enjoy story time with the Misawa Air Base Fire Department, including a fire truck display and a special visit from Sparky!

FAMILY TREE HISTORY CLASS

“How Can You Find Your Roots?”
Lead by Glenn Rowley, Lt Col. USAF (Ret.) & Mrs. Anne Rowley
Saturday, Oct. 18 | 3–5 p.m.
Library Makerspace | All Ages
Discover your family’s story. Mr. & Mrs. Rowley will help you find your family history using Family Search® and Ancestry®. As the library’s laptop availability is limited, we encourage you to bring your own personal laptop.

OVERSTREET MEMORIAL LIBRARY

BLDG. 629 | 226-4083

@MisawaBaseLibrary

STEM PROGRAMS

Kid K’Nex® | Wednesday, Oct. 1 | 10:30–11:30 a.m. | Ages 3+
LEGO® Club | Saturday, Oct. 4 | 3–4:30 p.m. | All Ages
Homeschool STEM Day | Wednesday, Oct. 8 | 11 a.m.–Noon
3D Pens | Wednesday, Oct. 15 | 3:30–4:30 p.m. | Ages 7+

POKÉMON™ TCG CLUB

Saturday, Oct. 11 & 25
11 a.m.–4 p.m. | All Ages

WEEKLY STORY TIME

Tuesdays | 10:30–11 a.m.
Ages 2–5

TODDLER PLAY GROUP

Thursdays
10:30–11:30 a.m.
Ages 1–5

CLOSURES

Monday, Oct. 13 | CLOSED
Columbus Day

LUNNEY YOUTH CENTER

BLDG. 112 | 226-3220 | Ages 9-12

Facebook icon @MisawaLunneyYouthCenter

MISAWA TEEN CENTER

BLDG. 626 | 226-2792 | Ages 13-18

Facebook icon @MisawaTeenCenter, Japan

We regret to inform you that the Lunney Youth Center and Misawa Teen Center facilities are temporarily closed due to insufficient staffing throughout the Youth Programs. We understand how important these spaces are to our community and sincerely apologize for the inconvenience. Please know we are actively working to resolve the issue and reopen as soon as possible.

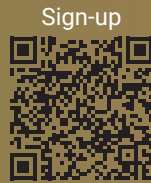
Thank you for your patience and understanding.



BLDG. 112 | 226-3220

Facebook icon @MisawaYouthSports & InstructionalClasses

YOUTH PROGRAMS



Sign-up

CYPBMS Parent Portal

SPORTS & INSTRUCTIONALS

INSTRUCTORS WANTED

- Guitar Instructor
- Drum Instructor
- Dance Instructor
- Sewing Instructor
- Cricut Instructor
- 3D Printing Instructor

Do you have any skills to impart on the youth of Misawa Air Base? Whether it's sports, arts, music, or anything in between, we'd love to have you join our team and help inspire the next generation! Visit the Lunney Youth Center or give us a call at 226-3220 to become an instructor today!

Volunteer Coaches Needed

Coaching Youth Sports is a fantastic opportunity to positively impact Team Misawa, improve athletic skills in youth, earn volunteer hours, and receive an LOA for your dedication! Volunteer coaches will have their **child's registration fees waived**, and those without children will receive a **\$50 FSS gift card** at the end of the season. We are looking for volunteer coaches for all sports, including basketball, volleyball, flag football, soccer, tee-ball and softball. Visit the Lunney Youth Center or give us a call at 226-3220 to become a volunteer coach today!

Spooktacular

BLDG. 412 | 226-2266 | Ages 5-12

@MisawaCheliSchoolAgeCare

Friday, Oct. 17

3:30-4:30 p.m.

Lunney Youth Center
SAC & CDC Members Only

Join us for a Spooktacular time filled with treats, carnival games and festive fun! Parents must sign their youth out from the CDC or SAC and escort them to LYC. Don't miss out, great memories, candy and laughter guaranteed!



YOIKO

BLDG. 10 | 226-4666 | 5 & under

@MisawaYoikoChild
DevelopmentCenter

CHELI SCHOOL AGE CARE

Pumpkin Decorating with Parents

Friday, Oct. 24

3-4 p.m. | Cheli SAC

Parent Involvement | Members Only

Join us for a fun and festive afternoon of pumpkin decorating, where families can get creative and enjoy quality time together. All supplies will be provided, and we'll be serving popcorn and drinks to keep the fall vibes going. Don't miss this chance to make memories, share laughs and take home your own pumpkin masterpiece!

CHILD DEVELOPMENT CENTER

Fall Harvest Festival & Parade

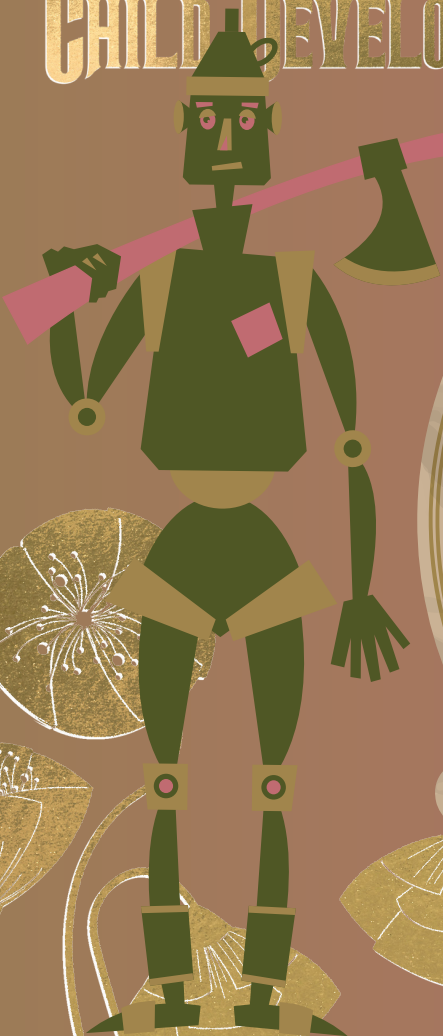
Friday, Oct. 31

Parade | 3:30 p.m.*

Yoiko CDC Parking Lot

The leaves are fallin', the pumpkins are growin' and it's time for our Fall Harvest Festival and Parade! Festivities include a pumpkin patch, photo booth and carnival games with PRIZES! We encourage all parents to dress your child up in fall themed costumes (no masks or anything scary, please). You don't want to miss out on this fall fun!

*Please arrive by 3:15 p.m. to participate in the parade



MISAWA PET KENNEL

HOWL-O-WEEN

Saturday, Oct. 25
10 a.m.–1 p.m.

Misawa Pet Kennel | FREE

Come celebrate at our spooktacular pet costume bash! Enjoy a costume contest, creative paw art projects and fun games for our furry friends. It's sure to be a howling good time!

GROOMING PACKAGES

Includes hair cut, bath, nail trim, ear cleaning, tooth brushing and gland expression.

SMALL | \$55

MEDIUM | \$60–65

LARGE | \$75–90

EXTRA LARGE | \$100

Scan the QR code for specific breed prices



HOURS OF OPERATION | MONDAY-FRIDAY | 10 a.m.–1:30 p.m. & 2:30–6 p.m.

Contact us for more information
@MisawaPetKennel
misawapetkennel@gmail.com

BLDG. 756 | 226-2228

SATURDAY | 10 a.m.–2 p.m. | Closed Sundays & federal holidays

DoDEA

**SOLLARS
ELEMENTARY
SCHOOL**



BLDG. 80 | 226-3933



**EDGREN MIDDLE
HIGH SCHOOL**

BLDG. 746 | 226-4377



Monday, Oct. 6
SAC Meeting

Monday, Oct. 6–Thursday, Oct. 9
Fire Prevention Week

Friday, Oct. 10
No School | School Holiday

Monday, Oct. 13
No School | Columbus Day

Tuesday, Oct. 14
No School | Teacher Training

Wednesday, Oct. 15–Thursday, Oct. 16
Fall Picture Day

Friday, Oct. 17
Save the Date | Fall Fest

Thursday, Oct. 23
End of 1st Quarter

Friday, Oct. 24
No School | Teacher Workday

Monday, Oct. 27–Friday, Oct. 31
Red Ribbon Week

Wednesday, Oct. 1
Powder Puff Football Game
6 p.m. | Eagles' Stadium

Thursday, Oct. 2
Wild Weasel Flyover
2:30 p.m. | Eagles' Stadium
Base Beach Bonfire | 6:30 pm

Friday, Oct. 3
Homecoming Tailgate
Homecoming Football Game
Edgren v. Yokota

Saturday, Oct. 4
Volleyball Game
9 a.m. | Edgren MHS, High School Gym

Saturday, Oct. 4
Homecoming Dance
Grades 9–12

Friday, Oct. 10
No School | Recess Day

Monday, Oct. 13
No School | Columbus Day

Tuesday, Oct. 14
No School | Teacher Training

Thursday, Oct. 16–Friday, Oct. 17
Fall Picture Day

Friday, Oct. 17
Eagle Beat Café at the Blackbox

Friday, Oct. 24
No School | Teacher Workday

ON AIR

FSS HOUR

EVERY WEDNESDAY
7-8 a.m.

on AFN 1575 **THE EAGLE**

Tune in every Wednesday morning to find out what's happening with 35th FSS on Misawa, Air Base. **OUTDOOR RECREATION** is featured on the first Wednesday of every month. **YOUTH PROGRAMS** is featured on the second Wednesday of every month.



35TH FORCE SUPPORT SQUADRON

WINNING WEDNESDAY

35FSS
.COM

If you are not following us on social media then you are missing out!

Winning Wednesday is your weekly chance to win a **\$50 FSS GIFT CARD**. To enter, simply comment on our post on Facebook & Instagram and a random submission will be selected as the **WINNER!**

 **@MISAWAFORCESUPPORTSQUADRON**

 **@MISAWAFSS**

Subscribe to the
LEISURE TIMES
Magazine

Get the Leisure Times delivered to your P.O. Box every month for FREE! Scan the QR code to sign up!



BANZAI AWARD



35TH FORCE SUPPORT SQUADRON

- B – BACKING THE WING:** Going above and beyond in backing/supporting the Wing.
- A – ADAPTABLE:** Demonstrating adaptability in tackling challenges.
- N – NOT COMPLACENT:** Avoiding complacency and contributing innovative ideas or processes.
- Z – ZEAL:** Displaying great energy and enthusiasm to accomplish the mission and/or task.
- A – ATTENTIVE:** Paying close attention to customer needs and providing the best Force Support.
- I – INFLUENCE:** Influencing positive change and personal and professional growth for others, the Squadron and/or the community.



Military | SrA Audrey Hamilton
Fitness and Sports Journeyman | Sustainment Services Flight



Civilian | Samuel Smith
Unit Program Coordinator | 35 Force Support Squadron

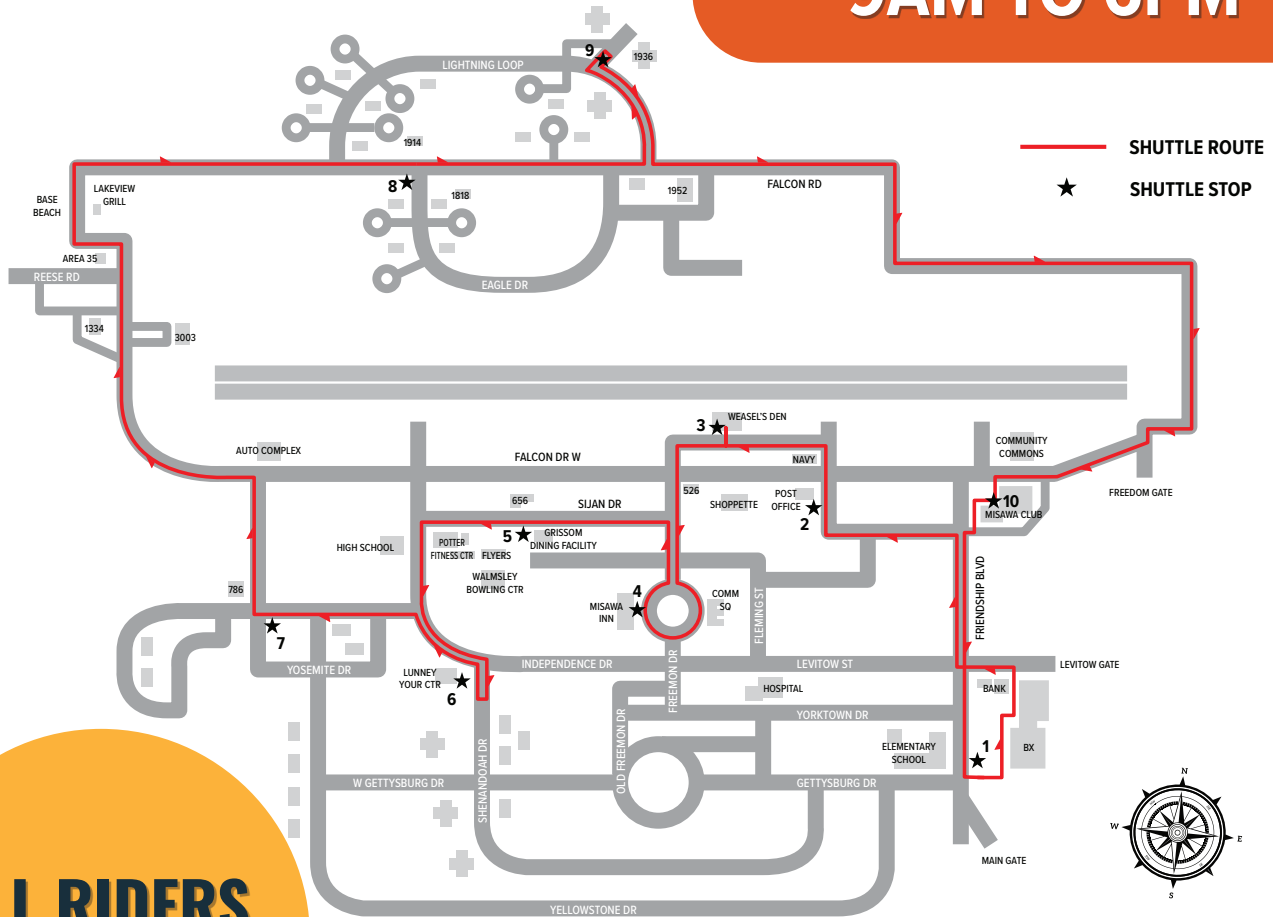


Team | Grissom Dining Facility
Sustainment Services Flight



BASEWIDE SHUTTLE SERVICE

AVAILABLE MONDAY - FRIDAY
9AM TO 6PM



**ALL RIDERS
WELCOME!**

CONTACT GROUND
TRANSPORTATION FOR ASSISTANCE

 315-226-3328



For real-time shuttle tracking
download the BusWhere App

Registration must be completed using a
government-issued email address.

(Dependents may use their sponsors email address,
as multiple accounts can be tied to one address.)

FSS Directory

**35 FORCE SUPPORT SQUADRON
COMMAND SECTION**
BLDG. 653, RM. 104
DSN: 226-3008 | Cell: 0176-77-3008
Mon-Fri 7:30 a.m.-4:30 p.m.

35 FSS MARKETING & PUBLICITY
BLDG. 656, RM. 1435
DSN: 226-9272 | Cell: 0176-77-9272
Mon, Tues, Thurs & Fri 7:30 a.m.-4:30 p.m.
Print Shop (register) 8 a.m.-4 p.m.
Closed weekends, federal holidays
& every Wednesday for training

35 FSS NAF HUMAN RESOURCES OFFICE
BLDG. 656, RM. 1460
DSN: 226-3108 | Cell: 0176-77-3108
Mon-Fri 9 a.m.-3 p.m.
Closed the third Thursday of every
month for training, weekends &
federal holidays

CIVILIAN PERSONNEL SECTION
BLDG. 656, 2ND FLOOR
DSN: 226-4621 | Cell: 0176-77-4621
Mon-Fri 9 a.m.-3 p.m.
Closed the third Thurs of every month
for training, weekends, FW Down Days
& federal holidays

MANPOWER & ORGANIZATION
BLDG. 653, RM. 2307
DSN: 226-5287 | Cell: 0176-77-5287
Mon-Fri 7:30 a.m.-4:30 p.m.
Closed the third Thurs of every month
for training, weekends, FW Down Days
& federal holidays

MILITARY PERSONNEL SECTION
BLDG. 653, RM. 101
DSN: 226-4002 | Cell: 0176-77-4002
Customer Support
Mon-Fri 9 a.m.-3 p.m.
Closed weekends & federal holidays &
the first Thurs each month

NAF ACCOUNTING OFFICE
BLDG. 653, 2ND FLOOR
DSN: 226-4360 | Cell: 0176-77-4360
Mon-Fri 7:30 a.m.-4:30 p.m.
Private Organizations: 226-2777

AREA 35
Paintball, Archery & Axe Throwing
Third Fri of every month 6-9 p.m.
First Sat of every month 10 a.m.-5 p.m.
Mon-Sat By Reservation
Closed Sun

ARTS & CRAFTS CENTER
SKILLS & TRADES CENTER | BLDG. 645
DSN: 226-4279 | Cell: 0176-77-4279
Retail & Ceramics
Tue-Sat 10 a.m.-6 p.m.
Closed Sun, Mon & federal holidays
Frames & Graphics
Tue-Sat 10 a.m.-2:30 p.m. & 3:30-6 p.m.
Closed Sun, Mon & federal holidays
Wood Shop
Tue-Fri Noon-2:30 p.m. & 3:30-8 p.m.
Sat 10 a.m.-Noon & 1-6 p.m.
Closed Sun, Mon & federal holidays

AUTO COMPLEX
Auto Hobby Center | BLDG. 767
DSN: 226-4654 | Cell: 0176-53-5181
Emergency/towing: 080-1651-9308
Tues-Sat 9 a.m.-6 p.m.
Closed Sun-Mon & federal holidays
Pit Stop Garage | BLDG. 965
DSN: 226-9486 | Cell: 0176-53-5181
Mon-Fri 7:30 a.m.-4:45 p.m.
Closed weekends & federal holidays

BASE BEACH & BOATHOUSE
Gate open | 5 a.m.-8 p.m.
Rentals | Sat & Sun 10 a.m.-5 p.m.

CHELI SCHOOL AGE CARE
BLDG. 412
DSN: 226-2266 | Cell: 0176-77-2266
Mon-Fri 6:30 a.m.-5:30 p.m.
Effective Monday, Sept. 15
Mon-Fri 7 a.m.-5 p.m.
Closed weekends & federal holidays
FW Down Days reservation only

COMMUNITY COMMONS
BLDG. 1006, BAY 1
DSN: 226-4128 | Cell: 0176-77-4128
Mon-Fri 9 a.m.-5 p.m.
Sat-Sun 10 a.m.-6 p.m.
FW Down Days 10 a.m.-5 p.m.
Closed on U.S. Federal holidays
Banzai's Playground | Bldg. 1006, Bay 2
Mon-Fri 9 a.m.-4:30 p.m.
Sat, Sun & FW Down Days 10 a.m.-5 p.m.
Closed on U.S. Federal holidays

EDUCATION & TRAINING SERVICES
BLDG. 653, RM. 203
DSN: 226-4201 | Cell: 0176-77-4201
Mon, Tues & Thurs 8 a.m.-Noon, 1 p.m.-4 p.m.
Wed 9 a.m.-Noon, 1-4 p.m.
Fri 8 a.m.-Noon
Closed weekends & federal holidays

FAMILY CHILD CARE
BLDG. 656, RM. 1457
DSN: 226-2273 | Cell: 0176-77-2273
Mon-Fri 7:30 a.m.-4:30 p.m.
Closed weekends, FW Down Days &
federal holidays

FREEDOM FITNESS CENTER
BLDG. 1962
DSN: 226-9987 | Cell: 0176-77-9987
Mon-Fri 8 a.m.-5 p.m.
Federal holidays, FW Down Days,
exercises & the 1st Thurs each month
24 hour access with card

GOSSER GOLF COURSE
BLDG. 1464
DSN: 957-1563 | Cell: 080-1857-0087
Golf Shop
Mon-Fri 6:45 a.m.-6 p.m.
Sat-Sun 5:45 a.m.-6 p.m.
Driving Range
24 hrs a day, 7 days a week
Closed Tuesdays 6-10 a.m. for maintenance
Purchase tokens during Pro Shop hours
All hours are weather permitting

HIMBERG POOL
BLDG. 625
DSN: 226-7665 | Cell: 0176-77-7665
Call ODR for Fish Bowl and PT reservations
Mon, Wed, Fri 6 a.m.-7 p.m.
Tues, Thurs 8 a.m.-7 p.m.
Sat 8 a.m.-4 p.m.
Closed Sat Noon-1 p.m.
FW Down Days 10 a.m.-5 p.m.
Closed the last Wed of the month, Sun, US &
select JP federal holidays

IRON HAND COMMUNITY FITNESS
BLDG. 1006, BAY 3
DSN: 226-3982
24 hour access with card only

LEFTWICH PARK
Near Security Hill, open daily, dawn to dusk
DSN: 226-9378 | Cell: 0176-77-9378
Call ODR to make a reservation

YOUTH SPORTS & INSTRUCTIONALS
BLDG. 112
DSN: 226-3220 | Cell: 0176-77-3220
Mon, Wed, Thurs, Fri 2:45-5:30 p.m.
Tuesday 1:45-5:30 p.m.
Closed weekends, FW Down Days &
federal holidays
Summer Hours (June 11-Aug. 15)
Mon-Fri 1-5:30 p.m.
Closed weekends, FW Down Days &
federal holidays

MILITARY & FAMILY READINESS CENTER
BLDG. 656
DSN: 226-4735 | Cell: 0176-77-4735
Mon, Tue, Wed, Fri 8 a.m.-4 p.m.
Thu 8 a.m.-2 p.m.
Closed federal holidays, weekends & the
1st & 3rd Thurs each month

MISAWA CLUB
BLDG. 485/486
Cashiers' Cage: 226-9122
Catering Reservations: 226-9124
Catering Office Hours
Mon-Fri 8 a.m.-4 p.m.
Catering requests:
misawacatering@gmail.com
Cashiers' Cage Hours
Mon-Fri 8:30 a.m.-5 p.m.
Closed on weekends
Venture Amusement Hours
Mon 8 a.m.-6 p.m.
Tue-Thu 8 a.m.-10 p.m.
Fri-Sat 8 a.m.-Midnight
Sun 9 a.m.-3 p.m.
Closed on federal holidays

MISAWA INN
BLDG. 670
DSN: 222-0282 | Cell: 0176-66-0282
24 hours a day, 7 days a week

MISAWA ITT
BLDG. 485
DSN: 226-3555 | Cell: 0176-77-3555
Mon-Fri 9 a.m.-4 p.m.
Closed weekends & federal holidays

MISAWA PET KENNEL
BLDG. 756
DSN: 226-2228 | Cell: 0176-77-2228
Mon-Fri 10 a.m.-6 p.m.
Sat 10 a.m.-2 p.m.
Closed every day from 1:30-2:30 p.m.
Closed Sun & federal holidays

MISAWA POST OFFICE
BLDG. 519
DSN: 226-3492 | Cell: 0176-53-5181
Closed Sun & federal holidays
Pick Up Window
Mon-Fri 10 a.m.-6 p.m.
Sat & FW Down Days 10 a.m.-4 p.m.
Customer Service
Mon-Fri 10 a.m.-5 p.m.
Official Mail Center
Mon-Fri 10 a.m.-4 p.m.
Finance (includes shipping)
Mon-Fri 10 a.m.-5 p.m.

**MISAWA TEEN CENTER &
LUNNEY YOUTH CENTER**
BLDG. 626
DSN: 226-2792 | Cell: 0176-77-2792
Temporarily CLOSED

OUTDOOR RECREATION CENTER
BLDG. 486
DSN: 226-9378 | Cell: 0176-77-9378
Mon, Tues, Thu & Fri 9 a.m.-6 p.m.
Sat 8 a.m.-2 p.m.
FW Down Days 10 a.m.-5 p.m.
Closed Sun, Wed & federal holidays

OVERSTREET MEMORIAL LIBRARY
BLDG. 629
DSN: 226-4083 | Cell: 0176-77-3068
Mon-Sat 10 a.m.-6 p.m.
Closed Sundays & federal holidays

**PROFESSIONAL DEVELOPMENT &
FIRST TERM AIRMAN CENTER**
BLDG. 653, RM. 209
DSN: 226-7829 | Cell: 0176-77-7829
Mon-Fri 7:30 a.m.-4:30 p.m.
(by appointment only)

POTTER FITNESS CENTER
BLDG. 622
DSN: 226-1964 | Cell: 0176-77-1964
Mon-Fri 5 a.m.-10 p.m.
Sat & Sun 8 a.m.-5 p.m.
Federal holidays, FW Down Days & the 1st
Thurs each month
24 hour access with card

THE LODGE
BLDG. 1482
DSN: 226-9378 | Cell: 0176-77-9378
Open for private reservations
Noon-10 a.m. next day
Call ODR to make a reservation
Tow Rope Operations
Jan.-March dependent on snowfall
Mon-Fri Reservation only
Sat 10 a.m.-3 p.m.
Sun No Tow Rope operations, hillside
open for Free Play

WALMSLEY BOWLING CENTER
BLDG. 627
DSN: 957-1554 | Cell: 0176-77-8255
then dial 1-281-657-1554
Sun 11 a.m.-7 p.m.
Mon-Thu 11 a.m.-9 p.m.
Fri & Sat 11 a.m.-11 p.m.
Federal holidays Noon-7 p.m.
Closed first Tuesday of the
month for maintenance

WEASELS' DEN
BLDG. 973
Mon-Fri 5 a.m.-10 p.m.
Sat, Sun & FW Down Days 8 a.m.-10 p.m.
Closed select federal holidays
Call ODR for Barn & Soccer Field reservations

YOIKO CHILD DEVELOPMENT CENTER
BLDG. 10
DSN: 226-4666 | Cell: 0176-77-4666
Mon-Fri 6:30 a.m.-5:30 p.m.
Effective Monday, Sept. 15
Mon-Fri 7 a.m.-5 p.m.
Closed weekends, federal holidays
& FW Down Days

AOMORI EATS
Misawa Club | BLDG. 485
DSN: 226-5062 | Cell: 0176-77-5062
Sunday Breakfast 9 a.m.-1:30 p.m.
Aomori Eats Lunch
Mon-Fri 10:30 a.m.-1:30 p.m.
Aomori Eats Dinner
Mon-Wed 4:30-8 p.m.

BUMPERS FUSION DINER
Walmsley Bowling Center | BLDG. 627
DSN: 957-1553 | Cell: 0176-77-8255
then 1-281-657-1553
Mon-Thu 6 a.m.-8:30 p.m.
Fri 6 a.m.-10:30 p.m.
Sat 8 a.m.-10:30 p.m.
Sun 8 a.m.-6:30 p.m.
Closed first Tuesday of the
month for maintenance

FALCON FEEDER DINING FACILITY
BLDG. 3262
DSN: 226-1636 | Cell: 0716-77-1636
Breakfast 6:30-8 a.m.
Lunch 10:30 a.m.-1 p.m.
Dinner 6-8 p.m.
Closed weekends & federal holidays

FAULTLINE
BLDG. 485
Friday-Saturday
9 p.m.-Midnight

FIT PIT
Potter Fitness Center | BLDG. 622
Mon-Fri 7 a.m.-7 p.m.
Closed first Thurs of every month
at 5 p.m.

FLIGHT KITCHEN DINING FACILITY
BLDG. 3262
DSN: 226-3889
Cell: 080-8207-0346
24 hours a day, 7 days a week
Limited to crew members and anyone
in a flight status as crew member
or passengers from 1:30-4 a.m.
call 080-8207-0346.

FLYERS
BLDG. 626
24 hours a day, 7 days a week
5:30 a.m.-9 p.m. | Full Menu
9 p.m.-5:30 a.m. | Grab&Go Only
DSN: 226-8255
then 1-281-657-1555
From a Japanese Phone: 0176-77-8255
then 1-281-657-1555
Closed second Mon of every month |
5:30 a.m.-5:30 a.m. the next day

GRISSOM DINING FACILITY
BLDG. 624
DSN: 226-3997
Breakfast Mon-Fri 5:30-8 a.m.*
Lunch Mon-Fri 10:30 a.m.-1:30 p.m.*
Dinner Mon-Fri 4:30-7:30 p.m.*
Midnight Meal Everyday
10 p.m.-12:30 a.m.*
Brunch Sat-Sun 6:30 a.m.-1 p.m.*
Dinner Sat-Sun 5-7 p.m.*
*Hours subject to change

LAKEVIEW GRILLE
Gosser Golf Course | BLDG. 1464
DSN: 957-1564 | Cell: 0176-77-8255
then dial 1-281-657-1564
Every day 10:30 a.m.-2 p.m.
Closed third Mon of every month

TANUKI'S
Misawa Club | BLDG. 485
Wed-Sat 4:30-10 p.m.

TOUCH & GO
North Base | BLDG. 1953
Mon-Fri 6 a.m.-6 p.m.
Sat 8 a.m.-2 p.m.
Closed Sundays & federal holidays

WILD WEASELS' BAR & GRILL
Misawa Club | BLDG. 485
DSN: 226-5062
Cell: 0176-77-5062
Thu-Sat 4:30-9 p.m.

FOOD

Tear here to hang on your fridge!

ADMINISTRATIVE

OCTOBER

SUN

MON

TUE

WED

THU

FRI

SAT

| SUN | MON | TUE | WED | THU | FRI | SAT |
|---|---|---|---|--|--|---|
| <p>5</p> <p>Bowling: HyperBowling Blast Club: Breakfast Buffet ITT: Takko Town Beef & Garlic Festival Shuttle ODR: Mt. Kurikoma & Kawarage Adventure (returns)</p> | <p>6</p> <p>Bowling: HyperBowling Blast Club: Maintenance Day MFRFC: Remote Tour Briefing First Step Japanese</p> | <p>7</p> <p>Bowling: Maintenance Day Club: Taco Tuesday Library: Fire Prevention Week Story Time MFRFC: Sponsorship Training Pre-Separation Briefing Konnichwa Japanese</p> | <p>8</p> <p>Bowling: HyperBowling Blast Intramurals Bowling League Club: Wing Wednesday Com Com: Taiko Drumming Library: Halloween Coloring (begins) Kid K'nex MFRFC: Pre-Deployment</p> | <p>9</p> <p>Bowling: HyperBowling Blast Hyper Thursday Kids Eat FREE Night EDU: MIITA Military Testing Library: Toddler Play Group MFRFC: Grocery Shopping Tour</p> | <p>10</p> <p>Bowling: HyperBowling Blast Laser Storm Airmen's Alley Pool: Family Fun Night</p> | <p>11</p> <p>A&C: Mini Monet Bowling: HyperBowling Blast Laser Storm Airmen's Alley Pins & Prizes ITT: Hiraizumi Library: Pokémon® TCG Club ODR: Mt. Mitsuishi Hike & Camp (departs) Hakodate Adventure (departs)</p> |
| <p>12</p> <p>Special Event: Cars & Coffee Bowling: HyperBowling Blast Club: Breakfast Buffet ODR: Mt. Mitsuishi Hike & Camp (returns)</p> | <p>13</p> <p>Columbus Day Bowling: HyperBowling Blast ODR: Hakodate Adventure (returns)</p> | <p>14</p> <p>Bowling: HyperBowling Blast Red Pin Tuesday Club: Taco Tuesday Family Member Social Library: Weekly Story Time MFRFC: Building Healthy Work Environments</p> | <p>15</p> <p>A&C: Cocktails & Ceramics Bowling: HyperBowling Blast Intramurals Bowling League Club: Wing Wednesday Com Com: Taiko Drumming Library: K'nex MFRFC: Pre-Deployment</p> | <p>16</p> <p>Bowling: HyperBowling Blast Hyper Thursday Kids Eat FREE Night Club: Trivia Night EDU: MIITA Library: Toddler Play Group MFRFC: Bundles for Babies</p> | <p>17</p> <p>Special Event: 4th Quarter Birthday Meal & CYP Spooktacular Bowling: HyperBowling Blast Laser Storm Airmen's Alley Com Com: Friday Night Bingo MFRFC: Reintegration ODR: Lightspeed Paintball Pool: Family Fun Night</p> | <p>18</p> <p>Special Event: Camp Wild Weasel (begins) A&C: Young Van Gogh Bowling: HyperBowling Blast Laser Storm Airmen's Alley ITT: Matsushima Osorezan Library: Family Tree History Class ODR: Team Misawa Haikoda Day Hike Akita's Autumn Wonders (departs)</p> |
| <p>19</p> <p>Special Event: Camp Wild Weasel (ends) Bowling: HyperBowling Blast Club: Breakfast Buffet ODR: Akita's Autumn Wonders (returns) Mountain Biking</p> | <p>20</p> <p>Bowling: HyperBowling Blast Flyers: Maintenance Day Lakeview: Maintenance Day MFRFC: Transition Workshop (3-day) Remote Tour Briefing First Step Japanese</p> | <p>21</p> <p>Bowling: HyperBowling Blast Red Pin Tuesday Club: Taco Tuesday Library: Weekly Story Time MFRFC: Transition Workshop (3-day) Konnichwa Japanese</p> | <p>22</p> <p>Bowling: HyperBowling Blast Intramurals Bowling League Dress-A-Pin (submission ends) Club: Wing Wednesday Com Com: Taiko Drumming MFRFC: Transition Workshop (3-day) Next Level Japanese</p> | <p>23</p> <p>A&C: Brushes & Beverages Bowling: HyperBowling Blast Hyper Thursday Kids Eat FREE Night Dress-A-Pin (voting begins) EDU: MIITA Military Testing Library: Toddler Play Group MFRFC: Employment (2-day)</p> | <p>24</p> <p>Special Events: Trunk-or-Treat & Zombie Glow Run 5k Bowling: HyperBowling Blast Laser Storm Airmen's Alley MFRFC: Employment (2-day) Reintegration Pool: Pool Party SAC: Pumpkin Decorating with Parents</p> | <p>25</p> <p>Special Events: AFE Comedy Show, Defend Area 35, 1-2-3 Challenge & Howl-O-Ween Bowling: HyperBowling Blast Laser Storm Airmen's Alley ITT: Apple Picking & Mount Nakano Momiji Tohoku Free Blades Ice Hockey Lake Juni Library: Pokémon TCG Club ODR: Oriase Gorge Hike Cycling 2 Rivers</p> |
| <p>26</p> <p>Bowling: HyperBowling Blast Club: Breakfast Buffet</p> | <p>27</p> <p>Bowling: HyperBowling Blast EDU: Military Testing MFRFC: First Step Japanese</p> | <p>28</p> <p>Bowling: HyperBowling Blast Red Pin Tuesday Club: Taco Tuesday Library: Halloween Story & Craft Time MFRFC: Language Exchange Night Building Emotional Resilience</p> | <p>29</p> <p>Bowling: HyperBowling Blast Intramurals Bowling League Club: Wing Wednesday Com Com: Taiko Drumming</p> | <p>30</p> <p>Bowling: HyperBowling Blast Hyper Thursday Kids Eat FREE Night Dress-A-Pin (voting ends) EDU: MIITA SkillBridge Library: Toddler Play Group</p> | <p>31</p> <p>Bowling: HyperBowling Blast Laser Storm Airmen's Alley Dress-A-Pin Winners Announced CDC: Fall Harvest Festival & Parade Library: Halloween Coloring (ends) MFRFC: Reintegration Pool: Family Fun Night</p> | <p>4</p> <p>Special Event: Together Under the Same Sky Bowling: HyperBowling Blast Laser Storm Airmen's Alley ITT: Takko Town Beef & Garlic Festival Shuttle Library: Lego Club ODR: Mt. Kurikoma & Kawarage Adventure (departs) Team Misawa Lake Towada Fall Kayak Super Saturday</p> |

WINTER FEST
Saturday, Dec. 6
9 a.m.-3 p.m.
Weasels' Den
FREE | All Ages

Sponsored by
USAA
No. 1 in the industry for 10 years



SAVE THE DATE



Tear here to hang on your fridge!

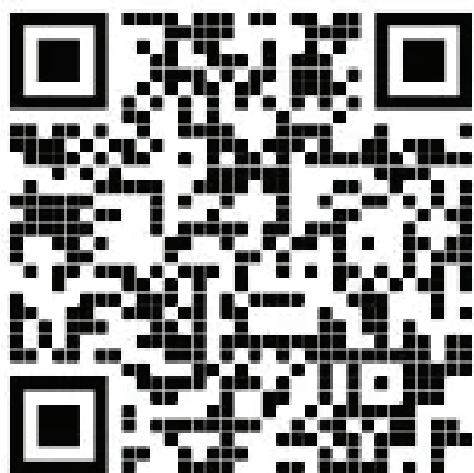
DORM WI-FI



UNLIMITED PLANS STARTING AT \$55.95/MO



Allied Telesis



SSID: Allied Telesis WiFi

FAST & EASY SIGN-UP

- ✓ UNLIMITED DATA USAGE
- ✓ TRUE GIGABIT FIBER SERVICE FROM WIRED PORT
- ✓ NO INSTALLATION FEES
- ✓ NO CONTRACT COMMITMENTS
- ✓ NO ADDITIONAL EQUIPMENT NEEDED
- ✓ CHOOSE FROM SEVERAL PLANS

USE YOUR ACCOUNT EVERYWHERE ALLIED TELESIS WI-FI IS AVAILABLE !

For More Information, Call Us At: 03-6868-2300 or +1-415-692-8300

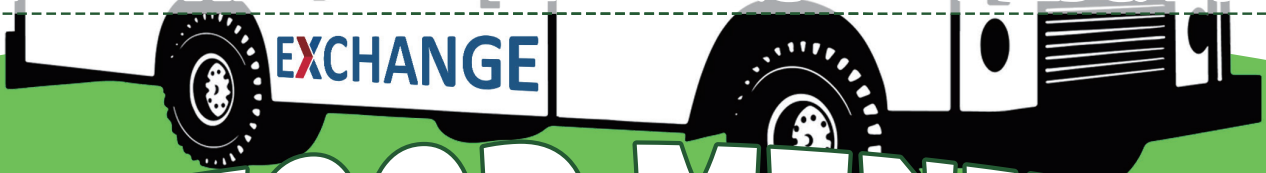
Paid Ad. No Federal endorsement of advertiser intended.

EXCHANGE FOOD TRUCK COMING TO NORTH BASE

WE'RE EXCITED TO ANNOUNCE THAT OUR EXCHANGE
MOBILE FOOD TRUCK WILL BE SERVING THE NORTH BASE COMMUNITY

EVERY THURSDAY FROM 1700 TO 1900!

- SERVICE WILL CONTINUE WEEKLY DURING THESE HOURS
- YOU'LL FIND US IN THE PARKING LOT OF BLDG. 1952



FOOD MENU



• PERSONAL PAN PIZZAS



• BENTOS

• ASSORTED SANDWICHES & SALADS

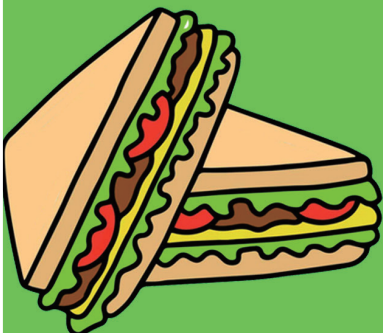


• BURRITOS

• CUP NOODLES



• PACKED SANDWICHES



• SODAS AND CHIPS



EXPRESS

Let us handle ALL OF YOUR CAR NEEDS!

Car Rental

¥4,000-

*Yellow Plate 12hrs

Ask About Our Paint
and Body Work

- ▶ Used Car Sales
- ▶ Repair
- ▶ U.S. Forces Car Insurance
- ▶ Towing available ON BASE
- ▶ Free Title Transfer
- ▶ Road Tax
- ▶ Vehicle Junking

*Let us know if you live off base.



Used Car Center & Insurance

Commercial: 0176-53-5959

Monday-Friday | 8:30 a.m. - 5:30 p.m.

Saturday | 8:30 a.m. - 2 p.m.



Lucky Car Insurance
Bldg. 653, Room 126

Lucky's Used Car Center
6-110-5, Okamisawa, Misawa, Aomori

Paid advertisement. No federal endorsement of advertiser(s) intended.

Moving into an
Off-Base House??
Looking for stable
Internet Provider!?

WOW!
**Easy Sign-up
Online!**

HeroNet

Toll Free 0120-711-566
From US 011-81-176-53-5136
helpdesk@heronet.jp

Home Internet/Mobile Hotspot/SIM

Paid advertisement. No federal endorsement of advertiser(s) intended.

Sponsorship & Advertising Opportunities on Misawa Air Base!

With a population of **over 11,000**, our community enjoys the many opportunities to explore Japan and the Pacific region. **Advertise your business and establish brand awareness** by advertising on Misawa Air Base!

Visit 35fss.com/ads
to learn more.



SAVE THE DATE WINTER FEST

Sponsored by



No federal endorsement of advertiser(s) intended.

Saturday, Dec. 6
9 a.m.-3 p.m. | Weasels' Den
FREE | All Ages



35 FSS / FSK
UNIT 5019, APO, AP 96319-5019